

# Indigenous plants of the Geelong Region

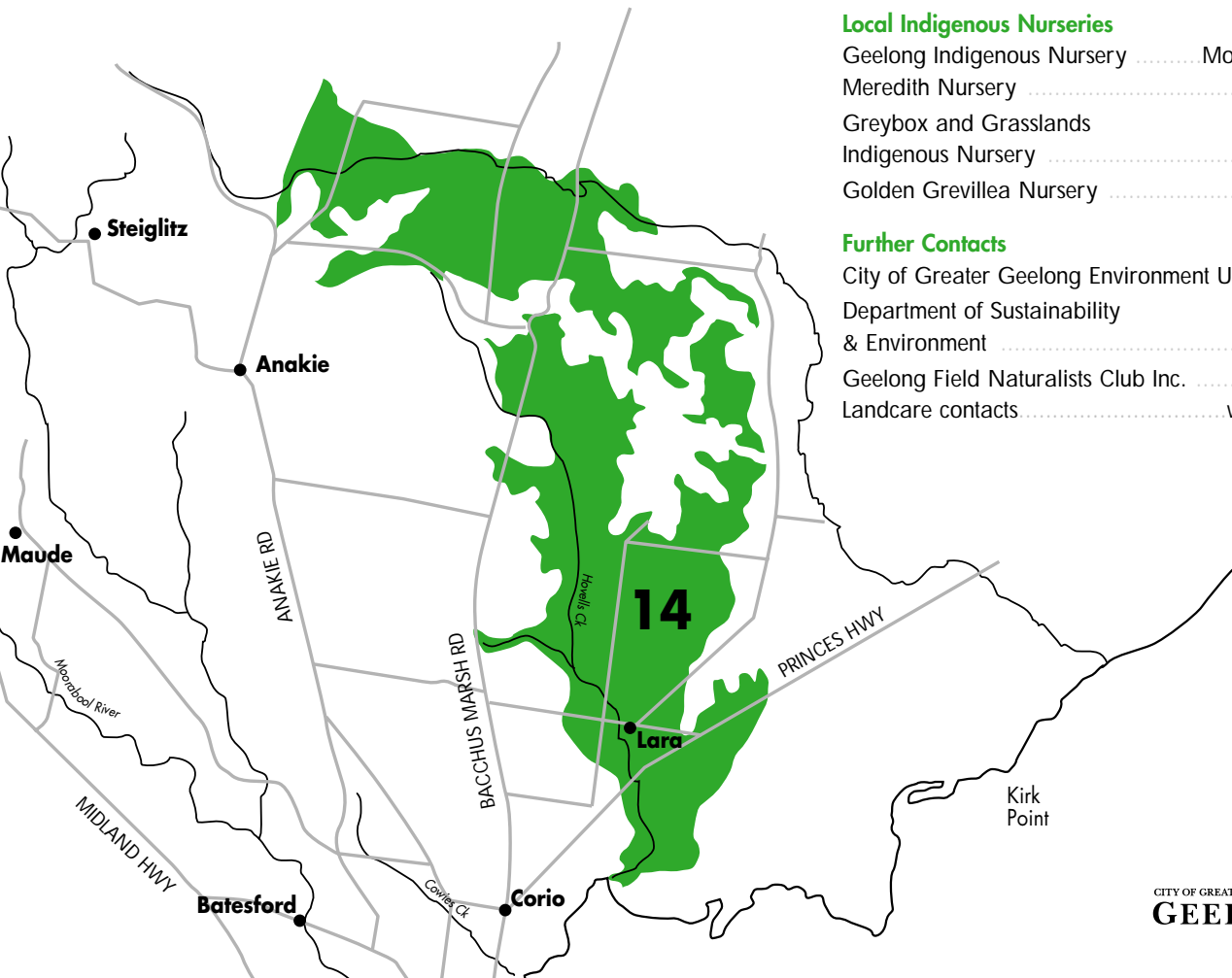
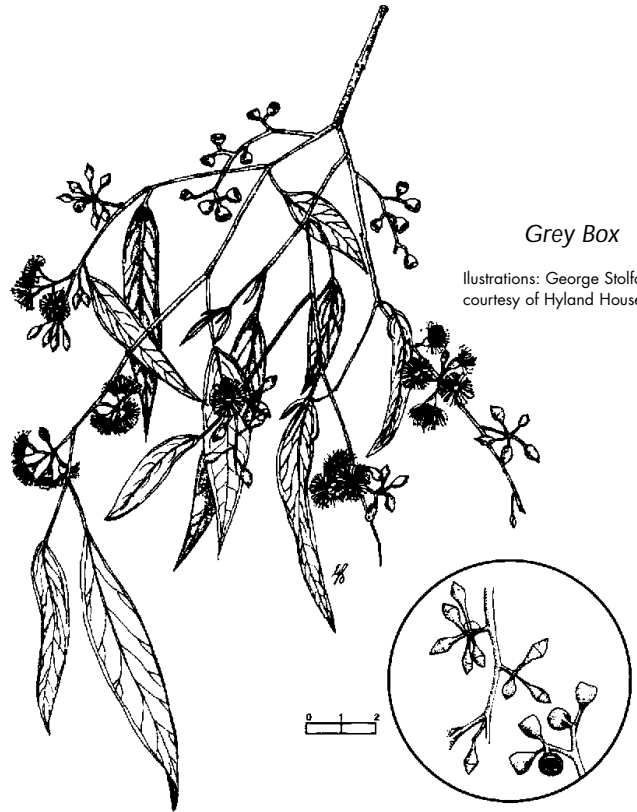
## ZONE 14

Consists of gently sloping hills to flats including gullies with a complex mix of sedimentary soils which include poor fertility non-marine gravels, sands and clays which are prone to erosion and moderately fertile marine (limestone) deposits with poor to moderate drainage. The average rainfall is 42 - 50cm.

## COLLUVIAL PLAINS EAST OF THE BRISBANE RANGES & YOU YANGS PLAINS

The area northeast of the You Yangs was grassy open woodland with grassland dominating on the drier sites. South of the You Yangs the vegetation would have been an open woodland characterised by Drooping Sheoke, Grey Box and Yellow Gum with occasional stands of Bullocke. Swamps in seasonally wet depressions were common throughout the area and were dominated by River Red Gum, Blackwood and Tangled Lignum.

The north-west of the You Yangs was an open woodland intermixed with grasslands of Kangaroo Grass on the drier sites and Tussock Grass along watercourses and wetter areas. There are many plant species that were once present in these areas but today are no longer found. These include the White Cypress-pine.



### Local Indigenous Nurseries

Geelong Indigenous Nursery	Mobile: 0421 006 070
Meredith Nursery	Ph. 5286 1397
Greybox and Grasslands Indigenous Nursery	Ph. 5369 5221
Golden Grevillea Nursery	Ph. 5284 1486

### Further Contacts

City of Greater Geelong Environment Unit	Ph. 5227 0785
Department of Sustainability & Environment	Ph. 136 186
Geelong Field Naturalists Club Inc.	Ph. 5229 3901
Landcare contacts	<a href="http://www.landcare.net.au">www.landcare.net.au</a>

# Indigenous plants of the Geelong Region

## TREE SPECIES

Zone 14 Colluvial plains east of Brisbane Ranges & You Yangs Plains

Common name	Botanical name	Size (H x W m)	Drier areas/ crests	Wetter areas/ watercourses
Lightwood	<i>Acacia implexa</i>	5-15 x 4-7	◆	
Black Wattle	<i>Acacia mearnsii</i>	8-25 x 6-10	◆	◆
Blackwood	<i>Acacia melanoxylon</i>	5-30 x 4-15		◆
Golden Wattle	<i>Acacia pycnantha</i>	3-10 x 2-5	◆	
Buloke	<i>Allocasuarina luehmannii</i>	5-15 x 5-10	◆ uncommon	
Drooping Sheoke	<i>Allocasuarina verticillata</i>	4-11 x 3-6	◆	
River Red Gum	<i>Eucalyptus camaldulensis</i>	15-35 x 15-35		◆
Yellow Gum	<i>Eucalyptus leucoxydon ssp connata</i>	10-20 x 6-20	◆	◆
Yellow Box	<i>Eucalyptus melliodora</i>	10-30 x 8-25		◆
Grey Box	<i>Eucalyptus microcarpa</i>	10-25 x 10-15	◆	
Red Box	<i>Eucalyptus polyanthemos</i>	7-25 x 5-15	◆ uncommon	
Manna Gum	<i>Eucalyptus viminalis</i>	10-20 x 8-15		◆
Cherry Ballart	<i>Exocarpos cupressiformis</i>	3-8 x 3-5	◆	❖

## SHRUB SPECIES

Zone 14 Colluvial plains east of Brisbane Ranges & You Yangs Plains

Common name	Botanical name	Size (H x W m)	Drier areas/ crests	Wetter areas/ watercourses
Gold-dust wattle	<i>Acacia acinacea</i>	0.5-2.5 x 2-4	❖	
Hedge Wattle	<i>Acacia paradoxa</i>	2-4 x 2-5	◆	
Sweet Bursaria	<i>Bursaria spinosa var macrophylla</i>	2-6 x 2-3	◆	◆
White Cypress-pine	<i>Callitris glaucophylla</i>	5 x 20	❖	
Drooping Cassinia	<i>Cassinia arcuata</i>	1-3 x 1-2	❖	
Rock Correa	<i>Correa glabra</i>	1-3 x 1-3	❖	
Gorse Bitter-pea	<i>Daviesia ulicifolia</i>	1.5 x 1-2	◆	
Smooth Parrot-pea	<i>Dillwynia glaberrima</i>	1-2 x 1-2	❖	
Wedge-leaf Hop-bush	<i>Dodonaea cuneata</i>	1-3 x 1-3	❖	
Shrub Violet	<i>Hymenandra dentata</i> var. <i>angustifolia</i>	2-4 x 1-2.5	◆	◆
Australian Indigo	<i>Indigofera australis</i>	1-2 x 1-2	❖	
Prickly Tea-tree	<i>Leptospermum continentale</i>	1-4 x 1-2		◆
Turkey-Bush	<i>Eremophila deserti</i>	1-4 x 2	❖	
Fragrant Saltbush	<i>Rhagodia parabolica</i>	0.8-2 x 0.5-1.5	❖	
Kangaroo Apple	<i>Solanum laciniatum</i>	1-3 x 1-3	◆	

## GROUNDCOVER AND TUSSOCK SPECIES

Zone 14 Colluvial plains east of Brisbane Ranges & You Yangs Plains

Common name	Botanical name	Size (H x W m)	Drier areas/ crests	Wetter areas/ watercourses
Berry Saltbush	<i>Atriplex semibaccata</i>	0.1-0.3 x 1-3	◆	
Common Everlasting	<i>Chrysocephalum apiculatum</i>	0.3 x 1-2	◆	
Black Anther Flax-lily	<i>Dianella revoluta</i>	0.5 x 1.5-2.0	◆	
Tussock Grass	<i>Poa labillardieri</i>	0.8 x 0.8		◆
Kangaroo Grass	<i>Themeda triandra</i>	0.3 x 0.3	◆	

◆ - species is present in areas of remnant vegetation      ❖ - species once occurred in this area