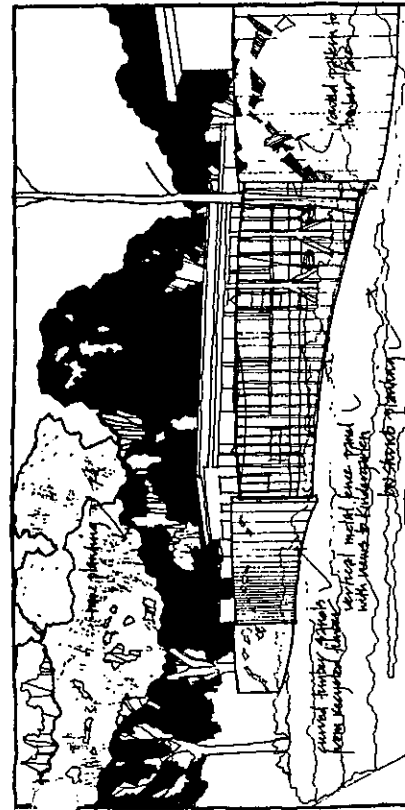
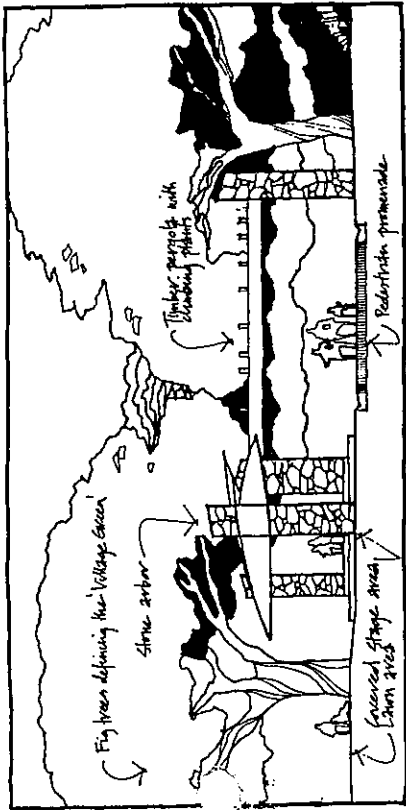


LEGEND

- Park title boundary
- Feature post and pipe rail fence
- Feature timber & steel fence
- Low volcanic stone wall
- Seating wall
- Bitumen paving
- Concrete paving
- Granitic sand paving
- Feature paving
- Proposed Eucalypts
- Proposed exotic deciduous trees
- Proposed feature planting - Fig (*Ficus rubiginosa*)
- Proposed low shrubs & groundcovers
- Lawn - irrigated



Kindergarten fence



Arbor Walk

Kindergarten
The existing Kindergarten is maintained, but with a new feature park fence made from recycled park timber and steel fencing. The curved fence panels provide a distinctive visual edge to the park and a higher level of security than the current fencing.

- 28. Visitor parking
- 29. Staff and visitor parking
- 30. Drop off point
- 31. Timber fence panels
- 32. Open steel panels

BBQ Area

This activity area provides refurbished BBQ's within the existing Lions Club shelter, paved surfaces, furniture and additional features.

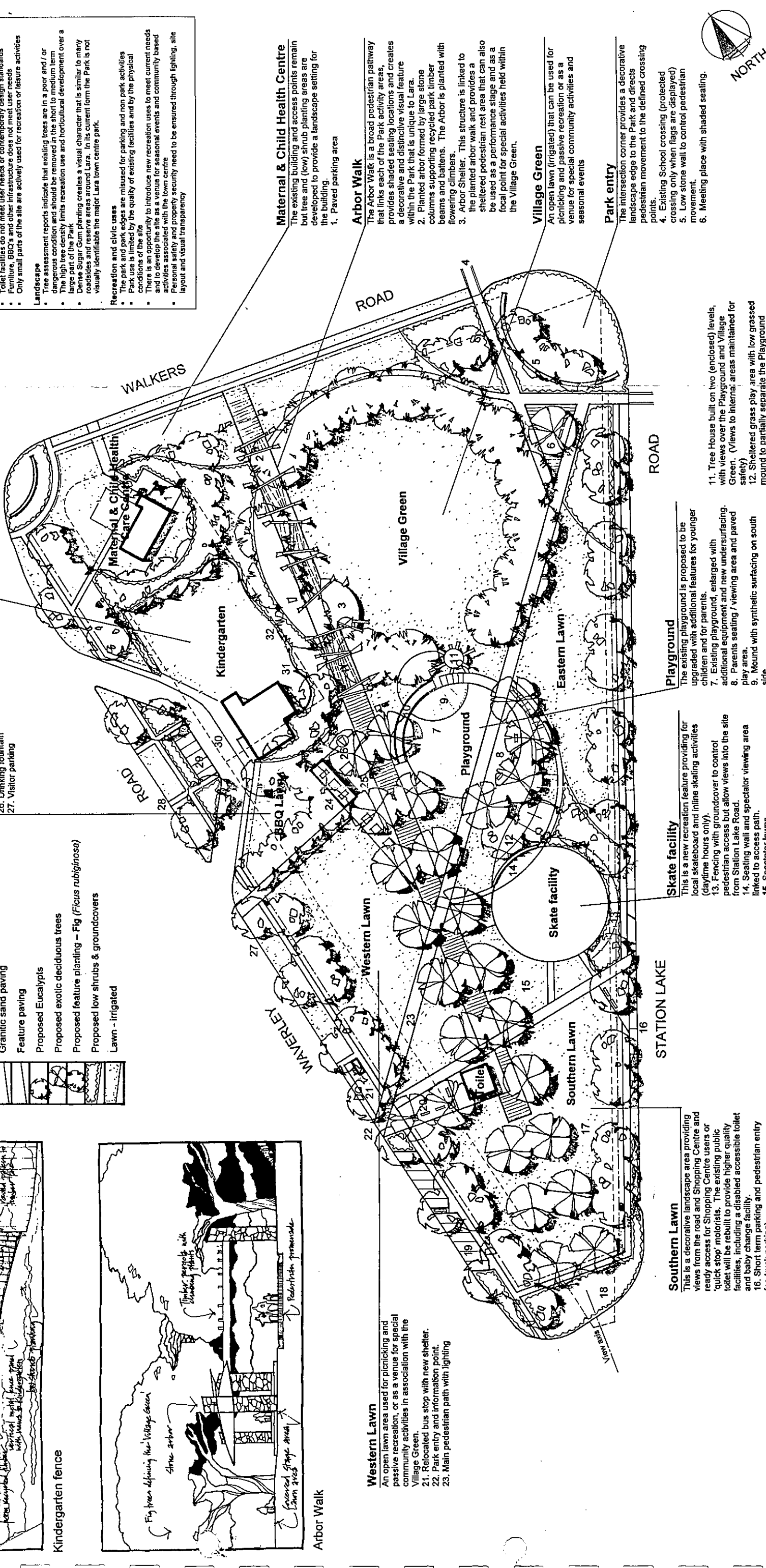
- 24. Existing shelter with refurbished BBQ's
- 25. Paved area with picnic tables and seating.
- 26. Drinking fountain
- 27. Visitor parking

Site design issues

Austin Park is an important community park that forms a part of the Lara town centre and provides a venue for children's play, BBQ and picnic activities and civic events. Over time, the Park has become physically degraded with a number of problems that limit its community use and overall appearance. Within this design study, the Park has been subject to a detailed process of site evaluation and community consultation. The results are reflected in the proposed site Masterplan.

Major issues addressed within the Masterplan include the following:

- Physical condition of the site & facilities**
 - Surface is poorly drained which limits recreation use and access
 - The density and type of tree planting affects turf and shrub growth
 - Surfaces are worn and not suited to recreational use, disabled or all weather
 - Pedestrian access
 - Toilet facilities do not meet user needs or contemporary design standards
 - Furniture, BBQ's and other infrastructure does not meet user needs
 - Only small parts of the site are actively used for recreation or leisure activities
- Landscape**
 - Tree assessment reports indicate that existing trees are in a poor and / or dangerous condition and should be removed in the short to medium term
 - The high density limits recreation use and horticultural development over a large part of the Park
 - Large Peppercorn Gum planting creates a visual character that is similar to many roadsides and reserve areas around Lara. In its current form the Park is not visually identifiable the major Lara town centre park.
- Recreation and civic uses**
 - The park and park edges are misused for parking and non park activities
 - Park use is limited by the quality of existing facilities and by the physical conditions of the site
 - There is an opportunity to introduce new recreation uses to meet current needs and to develop the site as a venue for seasonal events and community based activities associated with the town centre
 - Personal safety and property security need to be ensured through lighting, site layout and visual transparency



Maternal & Child Health Centre
The existing building and access points remain but tree and (low) shrub planting areas are developed to provide a landscape setting for the building.

- 1. Paved parking area

Arbor Walk

The Arbor Walk is a broad pedestrian pathway that links each of the Park activity areas, provides shaded seating locations and creates a decorative and distinctive visual feature within the Park that is unique to Lara.

- 2. Planted arbor formed by large stone columns supporting recycled park timber beams and battens. The Arbor is planted with flowering climbers.
- 3. Arbor Shelter. This structure is linked to the planted arbor walk and provides a sheltered pedestrian rest area that can also be used as a performance stage and as a focal point for special activities held within the Village Green.

Village Green

An open lawn (irrigated) that can be used for picnicking and passive recreation or as a venue for special community activities and seasonal events

Park entry

The intersection corner provides a decorative landscape edge to the Park and directs pedestrian movement to the defined crossing points.

- 4. Existing School crossing (protected crossing only when flags are displayed)
- 5. Low stone wall to control pedestrian movement
- 6. Meeting place with shaded seating.

Playground

The existing playground is proposed to be upgraded with additional features for younger children and for parents.

- 7. Existing playground, enlarged with additional equipment and new undersurfacing.
- 8. Parents seating / viewing area and paved play area.
- 9. Mound with synthetic surfacing on south side.
- 10. Hill slide

Skate facility

This is a new recreation feature providing for local skateboard and inline skating activities (daytime hours only).

- 13. Fencing with groundcover to control pedestrian access but allow views into the site from Station Lake Road.
- 14. Seating wall and spectator viewing area linked to access path.
- 15. Spectator lawns

Southern Lawn

This is a decorative landscape area providing views from the road and Shopping Centre and ready access for Shopping Centre users or 'quick stop' motorists. The existing public toilet will be rebuilt to provide higher quality facilities, including a disabled accessible toilet and baby change facility.

- 16. Short term parking and pedestrian entry (no truck parking)
- 17. Shaded lawn area
- 18. Decorative groundcover planting
- 19. Visitor parking
- 20. Paved pedestrian plaza with seating

Western Lawn

An open lawn area used for picnicking and passive recreation, or as a venue for special community activities in association with the Village Green.

- 21. Relocated bus stop with new shelter.
- 22. Park entry and information point.
- 23. Main pedestrian path with lighting



Scale

AUSTIN PARK MASTERPLAN

CITY OF GREATER GEELONG

July 2000
Plan No. 142-L1



Mark Reilly
Landscape Architects