

Guidelines for Walkable Coastal Environments

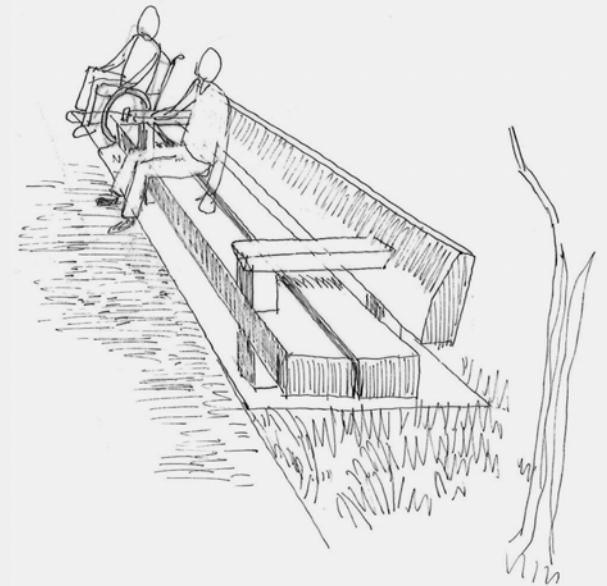
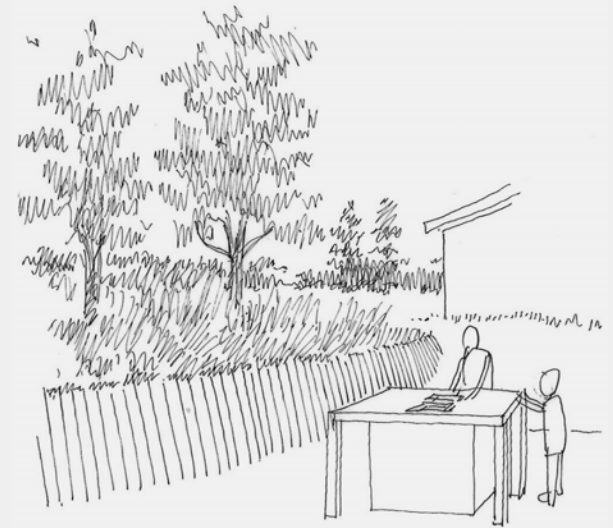
Planning for inclusive, equitable and accessible pedestrian environments in coastal locations

Background Report

MAV COTA

Positive Ageing

Amended May 2008



Background

These guidelines were undertaken by David Lock Associates in 2007/2008 for the City of Greater Geelong. They endeavour to explore the issues that effect the walkability of coastal settlements and outline the design solutions that can address those issues. The guidelines were prepared against a backdrop of an aging population and significant growth in coastal settlements as the “sea change” effect draws people to the coast to enjoy its exceptional environmental qualities. The guidelines reflect a commitment to ensuring these qualities can be maintained and even enhanced through careful design interventions that ensure all residents and visitors of these towns can enjoy an equitable degree of access to their coastline.

The implementation of these guidelines will enhance access to local amenities and activity centres for all members of the community, improve the aesthetics of the area and provide an overall higher quality urban environment while maintaining an elevated degree of ecological responsibility. The guidelines also consider safety issues by addressing areas of vehicle/pedestrian conflict, facilitate enhanced social inclusion by reducing areas of social segregation and improving both the quality and variety of settings for social interaction.

In this way it is hoped that the guidelines can provide some insight into how places can be designed to ensure *all* potential users can enjoy surroundings that are attractive, highly accessible and reflect their coastal character.

The guidelines were prepared based on the issues revealed through analysis of Indented Head, Portarlinton and St Leonards on the Bellarine Peninsula and their resident communities. It should be noted that the concepts expressed in this paper are considered to be general in nature rather than specifically tailored to a particular place. As such, they are intended to establish some key considerations in the design process, provoke discussion and get decision makers thinking about how more accessible environments can be achieved, rather than prescribe their detailed design. Nor should the exercises undertaken to reveal the issues be seen as the locations of the interventions in the three towns.

Note:

Different types of disability have different and sometimes conflicting needs. For example, a change in texture or level can assist a blind person by defining an edge, however that same change of texture or level can present a trip hazard to an elderly person. It is rarely possible to meet all needs in each intervention.

Value judgements will be needed to ensure each intervention provides as good a fit to the communities needs as possible. To this end, the guidelines document some considerations that the planners and designers implementing these guidelines should think about when deciding which interventions should be implemented.

Process

Identification and documentation of the issues.

In order to form a set of general guidelines for walkable coastal environments, it was necessary to analyse specific towns to understand the context-specific issues. The towns which were investigated were Indented Head, Portarlinton and St Leonards on the Bellarine Peninsula. These were mapped to gain an understanding of the key issues which affected walkability.

The first of the maps was Key Trip Generators. These plans illustrated the key destinations that people would typically walk to if they could. They are some of the settings within which people can meet their needs, and are considered important places that people should be able to walk to. This included shops, schools, community facilities and open space.

The second of the maps was Key Issues. These plans illustrated issues which would prevent or hinder residents from walking to the places identified as key trip generators. These plans included elements such as unsafe crossings, unmade and missing footpaths, steep paths, lack of shading at key locations, and conflicts between vehicles and pedestrians. They were identified through site visits, consultation with stakeholders, and community consultation described below.

Consultation

Consultation with the three communities was undertaken in October 2007. The purpose of this was to introduce the project and consultant team to the communities, and ensure that we understood the issues as they were perceived by the communities.

Process

Development of the guidelines

Based on the mapping, an understanding of the coastal environments, and the feedback from the three communities, the Guidelines for Walkable Coastal Environments were developed. For each issue, the guidelines identified the challenge they were to address, potential design solutions, and advantages and disadvantages of the potential design solutions.

Community Workshop

A workshop with the residents of the three communities was held in February 2008. The purpose of the workshop was to ensure that the guidelines which had been developed, accurately reflected potential solutions to the issues. To assist the communities in understanding the potential design solutions, Issues and Interventions plans for the three communities were prepared. These plans identified potential locations for where the design solutions could be applied. In this way, the design solutions could be tested for appropriateness in meeting the challenges. These plans could also be used as a starting point for Council to determine the application of the specific design solutions. Note that these plans were intended to better understand issues and to develop and test generic design solutions. The eventual location of these measures will be finalised by Council subsequent to this study.

Feedback

At the Community Workshop, a feedback form incorporating the entire guidelines was given to the residents. For each Issue identified in the Guidelines, the following questions were posed:

- Is this an important Issue?
- Do you think the Challenge described here addresses the Issue?
- Do you think the Design Solution(s) will work, and if so, will they work here?
- Is there anything else you would like to add about this Issue?

This feedback was collated by the City of Greater Geelong, and discussed with the consultant team. Agreement was reached on the changes to the Guidelines, and subsequently, the Guidelines for Walkable Coastal Communities were refined.

Final Presentation

In May 2008, the final draft guidelines were presented to Council and community members. As a result of this presentation and subsequent discussion, the following final changes were made:

- The colours in the palette were refined to better reflect coastal colours. Note: many of the colours/tones can be combined to create softer, more subtle tones.
- Further reference were made to the importance of ensuring adequate crossovers
- The background report has been amended to recognise the limitations of the GIS data on which it was based
- The guidelines refer to the importance of utilising these guidelines with the provision of cycling infrastructure and bus stops and when considering future subdivisions.

Appendices 1

Background Mapping

Key Trip Generators – Indented Head, St Leonards, Portarlinton

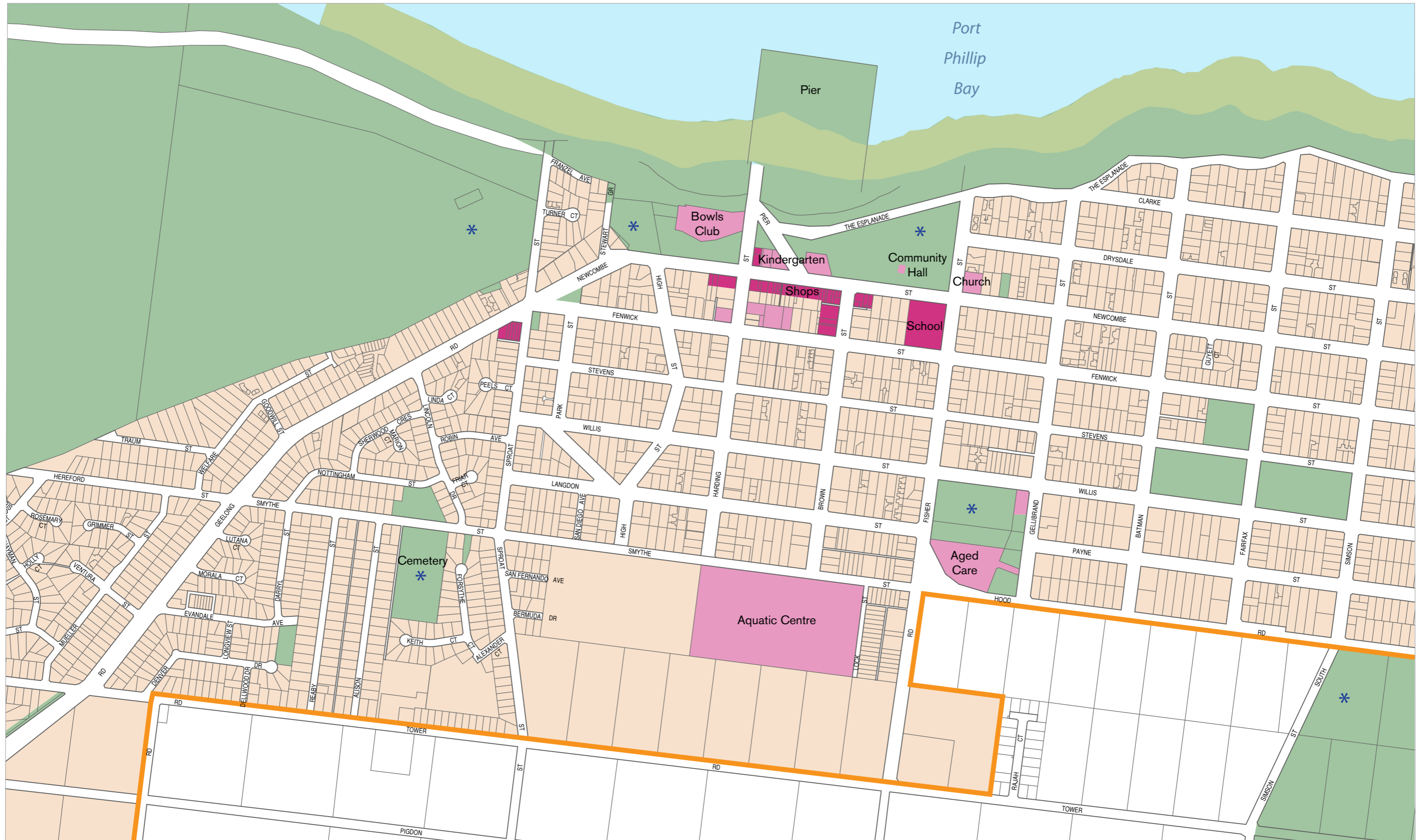
Key Issues – Indented Head, St Leonards, Portarlinton

Issues and Interventions – Indented Head, St Leonards, Portarlinton

NOTE: All base plans contained herein were prepared using the available GIS data which may vary from actual conditions on the ground. Consequently, these should be considered only as a guide to locations and areas.







2p Key Trip Generators
 MAV | COTA Positive Ageing
Portarlington

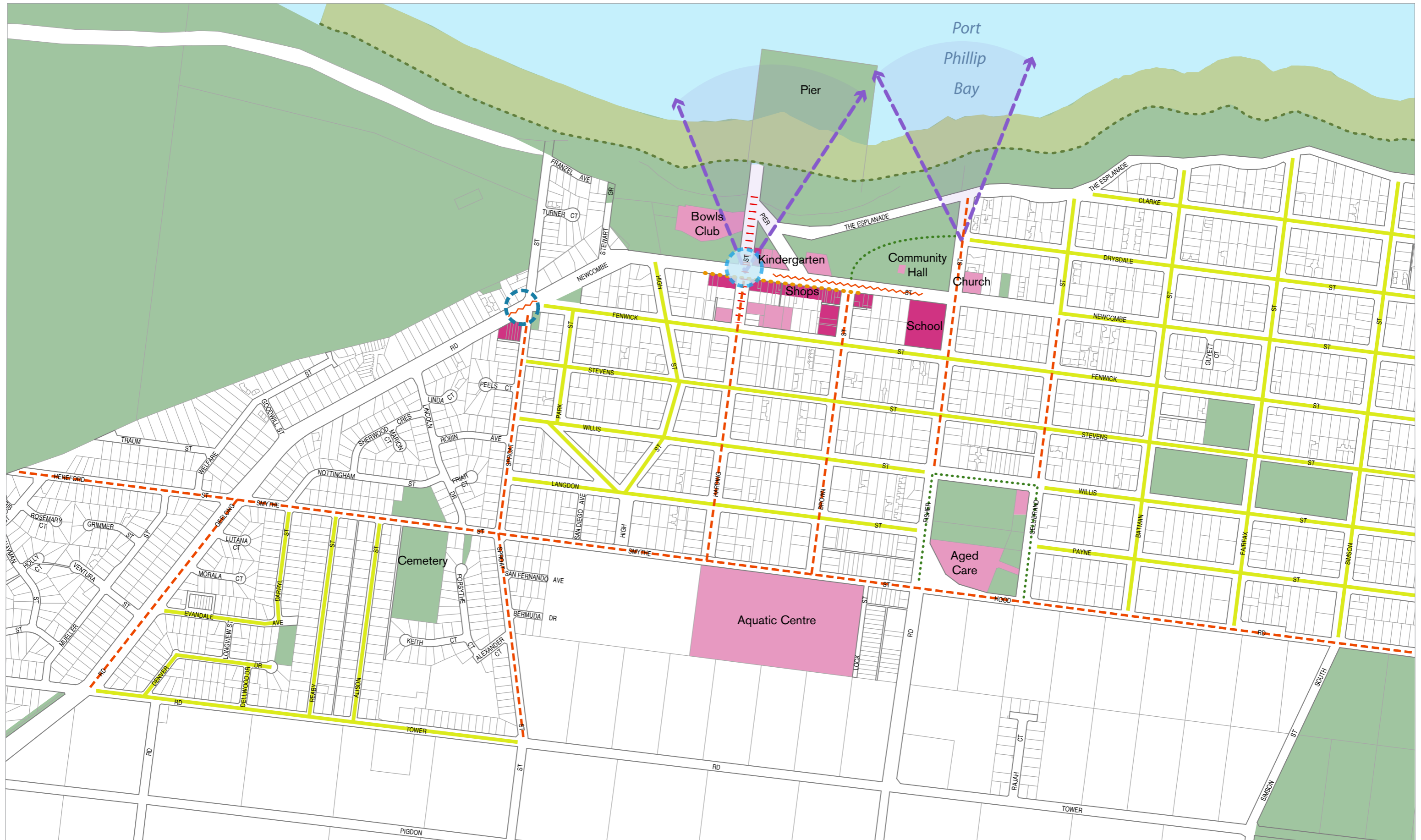
This plan illustrates the key destinations that people will typically walk to if they can. These are some of the settings within which people meet their needs and are considered important places that people should be able to walk to.

- Urban Growth Boundary
 - Intensive**
■ Shops, Schools
 - Secondary/Occasional**
■ Community Facilities, for example Kindergarten, Childcare, Aged Care, Religious Buildings, Medical Centres.
 - Open Space
 - ✱ Active Open Space
 - Trip Origins - Residential
 - Foreshore, Beach and Crown Land
- ↑ NORTH 5000 @ A3
 Note: Assumes people leave from home to begin their journey.





- Intensive**
Shops, Schools
- Secondary/Occasional**
Community Facilities, for example Kindergarten, Childcare, Aged Care, Religious Buildings, Medical Centres.
- Open Space
- Foreshore, Beach and Crown Land
- Waterway | Lake
- Unsafe Pedestrian Crossing to Beach
- Unsafe Crossing
- Unmade Footpath on Major Links
- Physical Barrier
- Unsurveilled Open Space
- No Shade/ Seating at Bus Stops
- Foreshore Track
- Steep Path
- Missing Recreational Link
- Vehicle Ped Conflict
- Unmade Road on Minor Streets
- Key Views

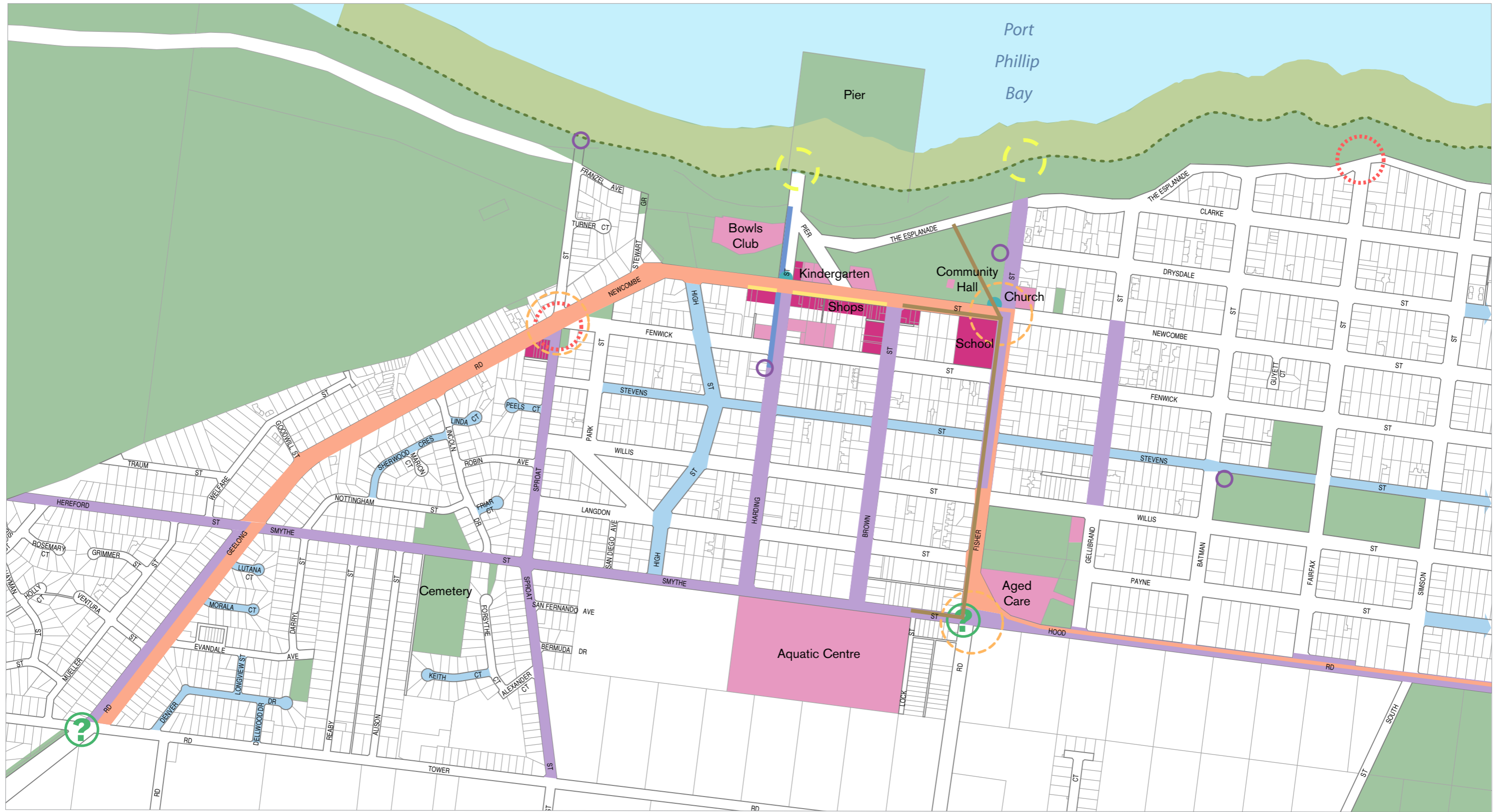


3p Key Issues
 MAV | COTA Positive Ageing
Portarlington

- Intensive**
Shops, Schools
- Secondary/Occasional**
Community Facilities, for example Kindergarten, Childcare, Aged Care, Religious Buildings, Medical Centres.
- Open Space
- Foreshore, Beach and Crown Land
- Waterway | Lake
- Unsafe Pedestrian Crossing to Beach
- Unsafe Crossing
- Unmade Footpath on Major Links
- Physical Barrier
- Unsurveilled Open Space
- Footpath Sharing Conflict
- No Shade/ Seating at Bus Stops
- Foreshore Track
- Steep Path
- Missing Recreational Link
- Vehicle Ped Conflict
- Unmade Road on Minor Streets
- Key Views





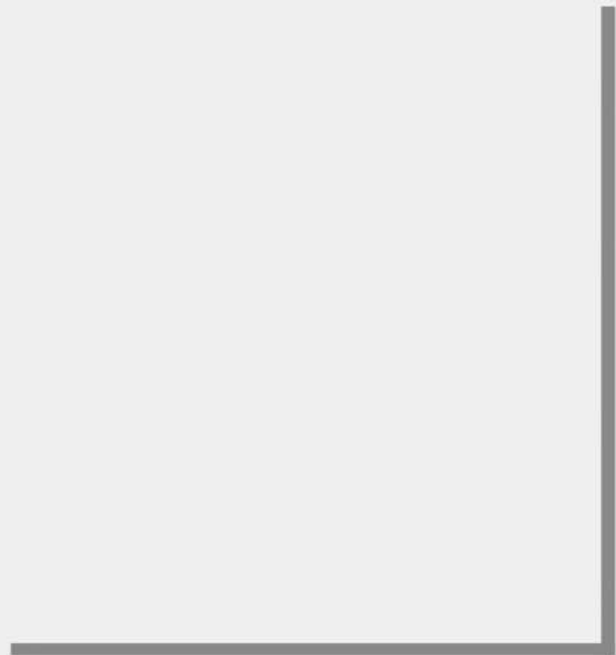
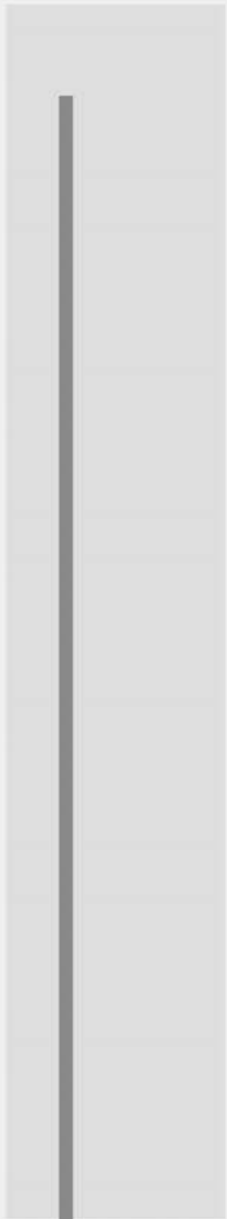


3p Issues & Interventions
 MAV | COTA Positive Ageing
Portarlington

- Trip Generators**
- Intensive**
Shops, Schools
 - Secondary/Occasional**
Community Facilities, e. g. Kindergarten, Childcare, Aged Care, Religious Buildings, Medical Centres.
 - Open Space
 - Foreshore, Beach and Crown Land
 - Waterway | Lake
 - Foreshore Track

- Issues to be addressed through Design Interventions (refer Guidelines)**
- 1: Gopher/Cafe Conflict
 - 2: Gopher/Vehicle Conflict (&4)
 - 4: Roads with No Footpaths
 - 5: Difficult Footpaths
 - 7: Inadequate Emphasis on Key Routes
 - 8: Breaks in the Journey to Town Centre
 - 10: Creeks and Drainage as Barriers

- 11: Absence of Infrastructure
- 12: Few Opportunities to Enjoy Views
- 13: Incomplete Understanding of Opportunities
- 14: Misunderstandings in the Community
- 15: Protecting people from extremes in weather (Foreshore and Beach)
- 16: Parking on Footpaths
- 17: Difficulty Crossing Roads (see also 2)
- Areas for Investigations for Shareways





Appendices 2

Community Feedback



Appendices 2a

Consultation with the three communities was undertaken in October 2007. The purpose of this was to introduce the project and consultant team to the communities and ensure that we understood the issues that affected walkability as they were perceived by the communities.

The following is a summary of the comments received from the consultation, outlining the key issues as perceived by the residents and informed the preparation of the Key Trip Generators and Key Issues plans for each of the communities. These plans formed the basis of the Issues to be addressed through Design Interventions, and ultimately the preparation of the Guidelines themselves.

MAP	Rd	Item
St Leonards	Murradoc Road	footpaths full length from Wattletree Road to Ibbotson Street. Recommend at least to McLeod Street and link within the recreation reserve land opposite Cole Street
St Leonards	Cole Street	footpath link from Leviens Road along Cole Street through to recreation reserve link around lake and to Murradoc Road
St Leonards	Lake	footpath on western side link Murradoc Road to Bluff Road. Provision of bridge crossings over large open drains to replace culverts.
St Leonards	Margaret Street	shared access link from Mainsail Drive through to Bluff Road
St Leonards	Lower Bluff	letters sent to all property owners seeking support for construction of roads, >80% do not support.
St Leonards	Lower Bluff	paths or connections in this area not possible without the sealing of roads as nstrips not accessible, ie vegetation, slope etc
St Leonards	Trewin Street	shared access link from from Horne Seaview and Bayside to Bluff Road
St Leonards	Coles Court	shared access link from Doongara Ave to Blanche Street and shopping centre
St Leonards	The Esplanade	crossing point at Murradoc Road, treatment to improve pedestrian access and safety review
Indented Head	The Esplanade	crossing points along The Esplanade for pedestrians, entrance to town, slow vehicles
Indented Head	New developments	ensure links to existing roads for on road access
Indented Head	Henderson Street	footpath circuit link Hood Road to The Esplanade and to Batman Street
Indented Head	Batman Street	treatment at intersection of The Esplanade to improve safety for turning vehicles and pedestrians
Indented Head	New developments	internal bus routes to new areas extend away from just The Esplanade
Portarlington	Fisher Street	link paths to Willis, Gellibrand, Hood for circuit around Ann Nichol House and Lions Aged care and Council drainage reserve and parkland
Portarlington	Smythe Street	link paths from Acquatic Centre to school, look at options either Brown or connect to Fisher and extend path

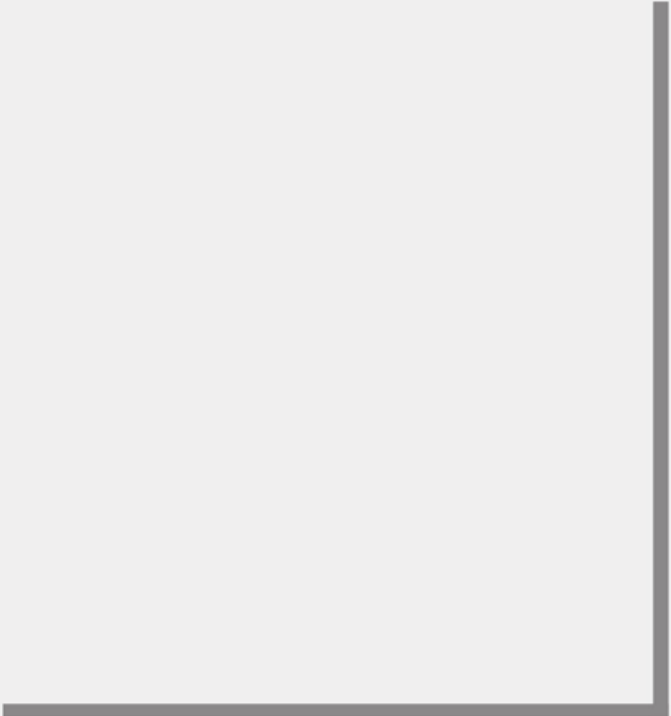
Portarlington	New developments	access to surrounding streets, Smythe St does High St to Newcombe St. high is constructed K&C, defined nstrips and most accessible for slope and crossfall
Portarlington	Smythe Street	intersection with Geelong road roundabout. Difficult crossing points, need to bring pedestrian across the road via alternate route away from the steep sections of the roundabout
Portarlington	Fenwick Street	carparking areas at rear of shops, linking to walkways and shops via ramps rather than steps, improved signage and lighting. New centre to change layout and access.
Portarlington	Newcombe Street	crossing to senior citizens centre across foopath, parked cars hide entrance.
Portarlington	Harding Street	access to pier, street is very steep alternate access points via ramps through new "Square" area
Portarlington	Mercer Street	proposed new aged care development, access to centre shopping possible via onroad paths
Portarlington	The Esplanade	access along beach paths and links to residential area, crossing road, designated points
Portarlington	Safe Harbour Project	linking to Major Projects work in relation to streetscape and town square
General	Portarlington	mostly focused on Newcombe Street and issues with the alfresco and how to educate customers not just traders. Gopher issues re access and safety on road and how can distinguish between busy road and safe road.
General	Treatments	cost of works and whether minor works at low cost is more appropriate given budgets, not aim for the moon. Design standards and avoidance of hazards and further maintenance costs
General	Warrants	traffic volumes used to determine where footpaths or shared paths should be on road of off road.
General	Servicing	ensureing access for garbage trucks and emergency vehicles to service areas with narrowed streets or on road works
General	signage	Where to install, place ahead of destination so 1. attracts you to go there, 2. advises of difficult sections to walk or cross and provides alternate routes

General	Curvilinear paths	retains trees but issues with services, people want to travel as the crow flies, difficult to negotiate if destination is hidden by trees, safety issues.
General	shade	provision on foreshore paths, shopping area, rest and lookout areas, combined structures, bus stops.
General	public realm	safety, maintenance costs, constructability
General	palette	sea colours, timber OK, exposed aggregate, no loose material or rough surfaces which could cause trippers
General	creeks / drainage lines	access across swales is generally an issue most are now deep table drains. Bridges to direct to a route and emphasise location to cross. Standard design and construction, meet safety requirements
General	access	necessary to restrict access to some areas due to safety issues, ie steep sections of foreshore, lake banks.
General	Knowledge sharing	support history, knowledge sharing, directions, local image on signs
General	different sections of community	was well represented at session with some disagreements or non support of others comments and issues, however many were in complete agreement on specific issues in their area which was good to see. Most were civic minded and wanted to see something that all could benefit from



Appendices 2b

The following is a summary of comments from the Community Workshop in February 2008 (described in the Process section earlier in the Background Report), based on the maps of potential locations of the design interventions (implementing the guidelines).
These comments were considered by the design team, and informed the revisions to the guidelines.



Street / Road	Action Required
Adam Street	Slow traffic - Issue 6 Option 1
Amalfi Way	NONE
Bass Court	NONE
Batman Court	NONE
Batman Road	Footpath - Gutters - Bus parking area - Island
Beachside Crescent	NONE
Brett Drive	Slow traffic - Issue 6 Option 1
Buckley Court	NONE
Cairnes Street	NONE
Calimo Place	NONE
Church Road	NONE
David Street	NONE
Eric Street	Unmade/dirt - Issue 4 Option 2
Ethereal Drive	NONE
Flinders Street	NONE
Glenrana Drive	NONE
Grassy Point Road	Unmade/dirt - Issue 4 Option 2
Gregory Court	NONE
Grieve Avenue	Slow traffic - Issue 6 Option 1
Gunsynd Drive	NONE
Helen Street	Unmade/dirt - Issue 4 Option 2
Henderson Street	Footpath - Bus parking area - Island at Hood Rd
Hood Road	Footpath - Service Rd - Issue 2 Option 1
Hygeia Court	NONE
Ibbotson Street	Unmade/dirt - Issue 4 Option 2
Jeffrey Street	Unmade - Slow traffic - Issue 6 Option 1
Jubilee Avenue	Slow traffic - Issue 6 Option 1
Kaitlers Drive	NONE
Lewis Street	Unmade/dirt - Issue 4 Option 2

Lilkenday Avenue	Unmade/dirt - Issue 4 Option 2
Martin Street	NONE
McDonald Street	NONE
McLean Street	NONE
Mizzen Court	NONE
Ozone Street	Slow traffic - Issue 4 Option 2
Peter Street	Half dirt - Issue 4 Option 2
Pigdon Street	Unmade - Slow traffic - Issue 6 Option 1
Pike Street	Unmade/dirt - Issue 4 Option 2
Positano Place	NONE
Sand Close	Slow traffic - Issue 6 Option 1
Sorrento Terrace	NONE
The Esplanade	Slow traffic - Town Centre - between Batman Rd and Hall
Valda Avenue	Slow traffic - Issue 6 Option 1
Walpole Avenue	Slow traffic - Issue 6 Option 1
Warner Street	Slow traffic - Issue 6 Option 1
Warner Street	Slow traffic - Issue 6 Option 1
Watercourse Court	NONE
Whiting Avenue	Unmade - Slow traffic - Issue 6 Option 1
Yacht Court	NONE
Coach Road	Unmade/dirt - Issue 4 Option 2

MAP	Rd	Item
Portarlington 1	Meuller	Shareway
Portarlington 1	Stevens	This is a good idea to use this as a shareway
Portarlington 1	Newcombe Street	Scouts hall marked on headland
Indented Head	Hood Rd	Service Rd Uneven - add option 2 (1)
Indented Head	Hood & Henderson	Sharp bend - crossing treatment
Indented Head	Henderson	Rd sealed and footpath
Indented Head	Pigdon and Esplanade	footpath ends should extend to shop
Indented Head	Pigdon from Henderson	footpath made
Indented Head	Walpole	Shareway
Indented Head	Batman from Henderson to Esplanade	footpath
Indented Head	batman to Grieve (Hall)	define township, slow traffic, options 6 and 3? Pause places maybe incorporate a bus shelter option 15(2) specific indented head township streetscape solution
Indented Head	Batman and Esplanade	Fix / square intersection and investigate visibility option 3 Esplanade and Batman (crossing to beach and shop)
Indented Head	MacDonald and Esplanade	Crossing needed
Indented Head		Batman Memorial - historic site , pause place needed,view @ rest area, crossing to connect memorial and park and picnic area
Portarlington 2		Church by the bay attracts families and youth
Portarlington 2		Public transport links need marking, bus routes and stops

Portarlington 2		Weight resistance training / gym @ pool - path to and crossing point
Portarlington 2	solutions 17 and 3 Crn Newcombe with Brown, Fisher and Harding	
Portarlington 2	Brown	- footpath from school to pool
Portarlington 2	Fairfax and The Esplanade	- Blind Corner
Portarlington 2		Number of Difficulty crossing points marked on foreshore
Portarlington 2	brown arrows on fisher to Brown ?	
Portarlington 2	Sproat and Newcombe	roundabout marked
St Leonards	Coastsworth and Ibbotson, Progress Hall	Lack of Footpaths - - both sides of road as shared by ped / cyclists / gophers
St Leonards		urgently need curb and channel in township
St Leonards	Murradoc to the Esplanade	dangerous crossing
St Leonards	Murradoc Rd	Priority 1 - footpaths on
St Leonards	Cole Street	Priority 2 - - no footpath
St Leonards		Priority - proposed walkign track linking Beach. Lake to Les Trewin Reserve, Charles McCarthy oval - possible bridge over lake

Appendices 2c

The following is a summary of comments from the Community Workshop in February 2008 (described in the Process section earlier) about the content of the design guidelines, from the feedback forms which accompanied the Guidelines.

These were considered by the design team, and informed the revisions to the guidelines.

Area	Comments
St Leonards	Targetting school area to sea front
St Leonards	No footpaths
St Leonards	Seating - opposite Lake
St Leonards	Apply for second seats grant on other side
St Leonards	Width / measurement of road checked - assess for shared
St Leonards	Bridge over lake
St Leonards	Footpath Murradoc Rd, shared use bikes, pedestrians, gophers, prams
St Leonards	Services Access (Ambulances)
Portarlington	Café maintain width footpath 1.8m
Portarlington	Kerb ramps/ access points - gophers - road crossing - design of @ walkways, street corners, pedestrian crossings
Portarlington	use of pedestrian crossing / drivers
Portarlington	signage in town - too much conflict
Portarlington	own gopher lane on road is ok - not on busy roads, shared use
Portarlington	crossing points - 1 pedestrian crossing Newcombe Street, the Esplanade
Portarlington	steep areas pier to town, r/a at sproat
Portarlington	Foreshore path links - through park
Portarlington	r/a - sight distance, signs / veg blocks cars "indicators" - alternate crossing points and links
Portarlington	winding path - will be shortest route as crow flies - fewer bends recommended
Portarlington	giveway at Fenwick and Mercer
Portarlington	passing areas on footpaths - highase
Portarlington	shade
Portarlington	sea theme art - timber good, large bouys not supported, exposed aggregate good, timber bricks good, trees coastal plants
Indented Head	Continue path north from Batman Rd to Hood Rd, Henderson Street, along Batman Rd (Triangular Network)
Indented Head	Pigdon Rd Unmade - needs to be sealed
Indented Head	Strengthen intersection of Batms / Esplanade - poor line of sight through intersection
Indented Head	Slow traffic along the Esplanade opposite camping ground
Indented Head	shareways along Jeffreys St to Helen St
Indented Head	Add footpath through Jeffrey to Yacht Court
Indented Head	Hood Rd/ The Esplanade needs crossing & treatment for safety issues as there is a problem with line of sight and speed and width

Portarlington Group 2	Newcombe Street (town centre)
Portarlington Group 2	median strip negotiation including step 1 and 2
Portarlington Group 2	disabled car space reverses into ped crossing
Portarlington Group 2	main street promotion of near shops parking
Portarlington Group 2	influence of design guideleins on Bellarine Bayside
Portarlington Group 2	Yellow bollards on road in front of outdoor eating areas (mavi Yunnis, Molly Malones, Portarlington Bakehouse etc
Portarlington Group 2	Pub, asnport links - bus stop route
Portarlington Group 2	need to locate ped median stip breaks to coincide with walkthroughs to car park at rear
Portarlington Group 2	link to newcombe street streetscape design plans at CoGG - eg treatment of Pier Street, location of ped crossing

Did this provide a good introduction to the Project				Issue 1: Gopher/café conflict				
---	--	--	--	-------------------------------	--	--	--	--

No.	Name	Surname	Position	Did this provide a good introduction to the Project?	Is this an important issue?	Do you think the Challenge described here addresses the issue?	Do you think the Design Solution(s) will work, and if so will they work here?	Is there anything else you would like to add about this issue?
1	Graeme	Collins	St Leonards Residents Association President	No response	Yes	Yes- in theory - needs common sense	possibly	practicality is essential - is it practical?
2	No name			No response	No response	OK	No	Education to shopkeeper to keep chair and table in area
3	No name		St Leonards Resident	No response	Yes	1.5 or 1.8	Yes	NW side of street is wide enough to cope with cafes but SE side has problems unless shops are set back

4	Ingrid	Novosel	Indented Head	No response	Not really, Indented Head's general store already has a wide footpath with room / corridor for movement	No response	No response	IH Store is being rebuilt during winter, need to review after its completion approx Nov/Dec 2008
5	Jane	Whittle	Portarlington Walking Group - Bellarine Community Health - combine comments with Cheryl Hilton	No response	Demarcation is not an issue - do not need the waste of funds to follow this issue. Gopher users will park where convenient to them	No	1.5m demarcation is adequate. Surface texture is not required to define area - consistent flat surface is required, ie. bitumen is good and easy to repair	Gopher parking - cafe space to allow gopher parking. Paving surface - stones, bricks are not safe, cause instability to gophers
6	Cheryl	Hilton	Portarlington Walking Group - Bellarine Community Health - combine comments with Jane Whittle	No response	Demarcation is not an issue - do not need the waste of funds to follow this issue. Gopher users will park where convenient to them	No	1.5m demarcation is adequate. Surface texture is not required to define area - consistent flat surface is required, ie. bitumen is good and easy to repair	Gopher parking - cafe space to allow gopher parking. Paving surface - stones, bricks are not safe, cause instability to gophers

7 Bill Dix Indented Head Residents Association President

Bill Dix Indented Head Residents Association President

8 No name

Portarlington Resident - maybe Magda?

Yes a clear and succinct account

Yes, especially as footpaths will get crowded in the future

Yes

Yes it could work - the point about the additional education component is important

The issue of stationary gophers is not specifically mentioned (i.e outside the newsagents) I have no idea how practical this is but what would be the implications of a 'gopher- only' lane at certain times, or a 'gopher priority' lane on the footpath

Issue 2: Gopher/vehicle conflict

No.	Name	Surname	Position	Is this an important issue?	Do you think the Challenge described here addresses the issue?	Do you think the Design Solution(s) will work, and if so will they work here?	Is there anything else you would like to add about this issue?
1	Graeme	Collins	St Leonards Residents Association President	Highly important	Emphasis on "continuous-convenient"	Yes	Allow for through traffic to clear congestion
2	No name			Yes	Yes	No	Not on busy roads
3	No name		St Leonards Resident	No	Yes	Option 1 would be very attractive but we do Not have sufficient traffic - a good footpath up both sides of Murradoc Rd to take pedestrian / gopher and bicycle traffic would solve our problems	With our small population, gopher / electric wheelchairs would be safest on footpath

4	Ingrid	Novosel	Indented Head	Yes needed in Hood Rd, service Rd	Yes	Yes, road uneven, footpath on edge of road	No response
5	Jane	Whittle	Portarlington Walking Group - Bellarine Community Health - combine comments with Cheryl Hilton	Yes	No	No! Not safe for all concerned. Physical barrier does not allow for gopher drivers to exit a ride when faced with vehicles impinging on the gopher space	Option 2 - 2m wide shared space much better! Pedestrian conflict safer option than vehicles
6	Cheryl	Hilton	Portarlington Walking Group - Bellarine Community Health - combine comments with Jane Whittle	Yes	No	No! Not safe for all concerned. Physical barrier does not allow for gopher drivers to exit a ride when faced with vehicles impinging on the gopher space	Option 2 - 2m wide shared space much better! Pedestrian conflict safer option than vehicles

7	Bill	Dix	Indented Head Residents Association President			
	Bill	Dix	Indented Head Residents Association President			
8	No name		Portarlington Resident - maybe Magda?	Yes especially from Aged Care facilities to Newcombe Street if gophers don't use footpath	Yes	no response

Issue 2 (Option 2): Design Solution

No.	Name	Surname	Position	Is this an important issue?	Do you think the Challenge described here addresses the issue?	Do you think the Design Solution(s) will work, and if so will they work here?	Is there anything else you would like to add about this issue?
1	Graeme	Collins	St Leonards Residents Association President	Yes- but this proposal is impractical on a main street - this is Australia Not Europe	With a lot of work	Not as shown	No response
2	No name			Yes	No response	No response	This would work in main street
3	No name		St Leonards Resident	No response	No response	Option 2 is best option for St Leonards	No response

4	Ingrid	Novosel	Indented Head	Yes	Yes	Yes, the Esplanade - North to Wood Rd, Henderson St, Batman Rd	No response
5	Jane	Whittle	Portarlington Walking Group - Bellarine Community Health - combine comments with Cheryl Hilton	Yes	Yes	Yes. Not much established vegetation will be affected in Portarlington Coastal landscape	Gradients : From median strip to road in Newcomb Street and pedestrian refuge in Sproate and Newcomb St roundabout. Not wide enough for families or gophers. Barriers could resolve this issue
6	Cheryl	Hilton	Portarlington Walking Group - Bellarine Community Health - combine comments with Jane Whittle	Yes	Yes	Yes. Not much established vegetation will be affected in Portarlington Coastal landscape	Gradients : From median strip to road in Newcomb Street and pedestrian refuge in Sproate and Newcomb St roundabout. Not wide enough for families or gophers. Barriers could resolve this issue

7 Bill Dix Indented Head Residents Association President

Bill Dix Indented Head Residents Association President

8 No name Portarlinton Resident - Yes maybe Magda?

Yes

They could be an encouragement to walkers in some areas.

I think if they are not in high pedestrian traffic areas (ie Newcombe Street) the potential for pedestrian / gopher conflict is minimal

Issue 3: Design of traffic safety measures

No.	Name	Surname	Position	Is this an important issue?	Do you think the Challenge described here addresses the issue?	Do you think the Design Solution(s) will work, and if so will they work here?	Is there anything else you would like to add about this issue?
1	Graeme	Collins	St Leonards Residents Association President	Always and especially adequate provision for young school children	In part	With much capital investment	No response
2	No name			Yes	No response	No response	No response
3	No name		St Leonards Resident	Yes	Yes	Crossing of Bluff Rd and the Esplanade to waterfront at Town Centre needs careful design such as above	Changed walking surface to warn pedestrians a major road is about to be crossed

4	Ingrid	Novosel	Indented Head	Yes	Yes	Yes the Esplanade/ Batman Rd cnr North-South and East-West. Between Batman Park and General Store, also Henderson St at Hood Rd	No response
5	Jane	Whittle	Portarlington Walking Group - Bellarine Community Health - combine comments with Cheryl Hilton	Between Brown and Harding Streets - need median strip break wide enough for families and gophers to seek safe refuge from traffic	Yes	Smooth surface - not become a repository for hazardous items, ie. Cans, syringes, etc	Timber edges can be vandalised and therefore a hazard
6	Cheryl	Hilton	Portarlington Walking Group - Bellarine Community Health - combine comments with Jane Whittle	Between Brown and Harding Streets - need median strip break wide enough for families and gophers to seek safe refuge from traffic	Yes	Smooth surface - not become a repository for hazardous items, ie. Cans, syringes, etc	Timber edges can be vandalised and therefore a hazard

7 Bill Dix Indented Head
Residents Association
President

Bill Dix Indented Head
Residents Association
President

8 No name Portarlinton Resident - Yes - enhances appearance Yes
maybe Magda?

Could be good at Brown Street,
Smythe Street intersection
where school children walk to
pool.

Pedestrians crossing Smythe from the
Arlington Rise development into High
Street will be a major problem, not sure
this solution would work for that location

Issue 4: Roads with No footpaths

No.	Name	Surname	Position	Is this an important issue?	Do you think the Challenge described here addresses the issue?	Do you think the Design Solution(s) will work, and if so will they work here?	Is there anything else you would like to add about this issue?
1	Graeme	Collins	St Leonards Residents Association President	Not for urban precincts like St Leonards	Inadequately	Test must be - is this practical in an outer urban township	No response
2	No name			Yes	No response	No response	No response
3	No name		St Leonards Resident	Yes	Yes but safety is the main issue!!	Install footpath - excellent suggestion in Murradoc Rd from Ibbotson St to town	Concrete exposed aggregate or recycled plastic. Something with minimum upkeep but preferably more attractive than plain concrete

4	Ingrid	Novosel	Indented Head	Yes	Yes	Yes the Esplanade, North to Hood Rd, Henderson St Batman Rd	Footpath needed between Jeffrey St and Helen St to Yacht Crt, uneven dirt track - used by locals to walk to shop
5	Jane	Whittle	Portarlinton Walking Group - Bellarine Community Health - combine comments with Cheryl Hilton	Yes- Portarlinton is sadly lacking footpaths for all residents	Yes	Exposed aggregate is best option. Timber is high maintenance and warps to become a hazard over time.	No response
6	Cheryl	Hilton	Portarlinton Walking Group - Bellarine Community Health - combine comments with Jane Whittle	Yes- Portarlinton is sadly lacking footpaths for all residents	Yes	Exposed aggregate is best option. Timber is high maintenance and warps to become a hazard over time.	No response

7	Bill	Dix	Indented Head Residents Association President				
	Bill	Dix	Indented Head Residents Association President				
8	No name		Portarlinton Resident - Yes and more particularly on maybe Magda? sloping gradient streets	Yes not as visually appealing as share ways	Yes		no response

Issue 4 (Option 2): Design Solution

No.	Name	Surname	Position	Is this an important issue?	Do you think the Challenge described here addresses the issue?	Do you think the Design Solution(s) will work, and if so will they work here?	Is there anything else you would like to add about this issue?
1	Graeme	Collins	St Leonards Residents Association President	Is this Australia? Of course!	No response	Is it safe? - above all else	No response
2	No name			Yes	No response	No response	No response
3	No name		St Leonards Resident	No	No response	No response	No response

4	Ingrid	Novosel	Indented Head	Yes	Yes	Yes	Use in Eric Street, Helen St, Lewis St, Lilkenday Ave, Ozone St, Peter St, Pike St, Coach Rd
5	Jane	Whittle	Portarlington Walking Group - Bellarine Community Health - combine comments with Cheryl Hilton	Ok in courts except for drainage issues	Sherwood Crescent is a speedway at times and unsafe for pedestrians. Denver and Longview are also potential sites	Drainage is Not considered and is vital to all residents	Marion Court should also be investigated as a share way
6	Cheryl	Hilton	Portarlington Walking Group - Bellarine Community Health - combine comments with Jane Whittle	Ok in courts except for drainage issues	Sherwood Crescent is a speedway at times and unsafe for pedestrians. Denver and Longview are also potential sites	Drainage is not considered and is vital to all residents	Marion Court should also be investigated as a share way

7	Bill	Dix	Indented Head Residents Association President			
	Bill	Dix	Indented Head Residents Association President			
8	No name		Portarlinton Resident - Yes maybe Magda?	Yes	Allows better expression of coastal character	no response

Issue 5: Difficult footpaths because steep slopes, slippery surfaces, narrow or discontinuous path

No.	Name	Surname	Position	Is this an important issue?	Do you think the Challenge described here addresses the issue?	Do you think the Design Solution(s) will work, and if so will they work here?	Is there anything else you would like to add about this issue?
1	Graeme	Collins	St Leonards Residents Association President	Not in St Leonards	No response	No response	No response
2	No name			Yes	No response	No response	No response
3	No name		St Leonards Resident	No St Leonards is very flat on the whole	No response	No response	No response

4	Ingrid	Novosel	Indented Head	Yes	Yes	Yes	The Esplanade
5	Jane	Whittle	Portarlington Walking Group - Bellarine Community Health - combine comments with Cheryl Hilton	Yes, good surface, ie. Exposed aggregate is essential	Yes	Yes	Need to spread a rise over a greater distance for elderly, disabled and most public access will benefit, ie. Sorrento - rise from foreshore to Portsea Road
6	Cheryl	Hilton	Portarlington Walking Group - Bellarine Community Health - combine comments with Jane Whittle	Yes, good surface, ie. Exposed aggregate is essential	Yes	Yes	Need to spread a rise over a greater distance for elderly, disabled and most public access will benefit, ie. Sorrento - rise from foreshore to Portsea Road

7 Bill Dix Indented Head
Residents Association
President

Bill Dix Indented Head
Residents Association
President

8 No name Portarlington Resident - Yes
maybe Magda?

Tick

Tick

This is a perfect solution for the Upper blocks of Harding Street which I think would be a better route to Newcombe Street than High Street for Arlington Rise walkers. Could be a real feature for the town and is not as difficult a gradient as High Street

Issue 5 (Option 2): Design Solution

No.	Name	Surname	Position	Is this an important issue?	Do you think the Challenge described here addresses the issue?	Do you think the Design Solution(s) will work, and if so will they work here?	Is there anything else you would like to add about this issue?
1	Graeme	Collins	St Leonards Residents Association President	Not in St Leonards	No response	No response	No response
2	No name			No response	No response	No response	No response
3	No name		St Leonards Resident	No	No response	No response	No response

4	Ingrid	Novosel	Indented Head	No	No response	No response	Indented Head is relatively flat with rises gradual - don't need ramp or steps
5	Jane	Whittle	Portarlington Walking Group - Bellarine Community Health - combine comments with Cheryl Hilton	Yes	Yes	Yes	Pause space essential near stairs, not on them
6	Cheryl	Hilton	Portarlington Walking Group - Bellarine Community Health - combine comments with Jane Whittle	Yes	Yes	Yes	Pause space essential near stairs, not on them

7 Bill Dix Indented Head
Residents Association
President

Bill Dix Indented Head
Residents Association
President

8 No name Portarlinton Resident - tick
maybe Magda?

no response

no response

Harding Street because it is so wide and then
paved could be a mini-Lombard Street for
Port and a delight for walkers. Lombard
Street is the so called "crookedest street" in
the world in San Francisco

Issue 6: Unmade roads with No footpaths in areas of established and valued street planting

No.	Name	Surname	Position	Is this an important issue?	Do you think the Challenge described here addresses the issue?	Do you think the Design Solution(s) will work, and if so will they work here?	Is there anything else you would like to add about this issue?
1	Graeme	Collins	St Leonards Residents Association President	Yes	Possibly	Yes	No response
2	No name			Yes	Yes	Yes	No response
3	No name		St Leonards Resident	Yes	Yes	On Lower Bluff this would be ideal but is a long way in the future with cost restraints	No response

4	Ingrid	Novosel	Indented Head	Yes, very	Yes	Yes	Urgently needed in streets unmade to slow traffic. Streets shared with pedestrians - see list attached
5	Jane	Whittle	Portarlington Walking Group - Bellarine Community Health - combine comments with Cheryl Hilton	Yes	Yes	Yes	Proper drainage and maintain existing established trees to remain. A form of calming device is necessary in High Street and Stevens Street - high volume of traffic. N/A. Volume of traffic, ie. holiday periods
6	Cheryl	Hilton	Portarlington Walking Group - Bellarine Community Health - combine comments with Jane Whittle	Yes	Yes	Yes	Proper drainage and maintain existing established trees to remain. A form of calming device is necessary in High Street and Stevens Street - high volume of traffic. N/A. Volume of traffic, ie. holiday periods

7 Bill Dix Indented Head
Residents Association
President

Bill Dix Indented Head
Residents Association
President

8 No name Portarlinton Resident - Yes
maybe Magda? tick Probably not in hilly areas
best in flatter section of
Town No response

Issue 6 (Option 2): Design Solution

No.	Name	Surname	Position	Is this an important issue?	Do you think the Challenge described here addresses the issue?	Do you think the Design Solution(s) will work, and if so will they work here?	Is there anything else you would like to add about this issue?
1	Graeme	Collins	St Leonards Residents Association President	Ideal around St Leonards lake - get on with it	No response	No response	No response
2	No name			Do not like this	No response	No response	No response
3	No name		St Leonards Resident	No response	No response	No response	This type of wandering pathway would be ideal for walking / bicycle track around lake and parklands

4	Ingrid	Novosel	Indented Head	No		No response	No response	No response
5	Jane	Whittle	Portarlington Walking Group - Bellarine Community Health - combine comments with Cheryl Hilton	Yes		Yes	Pier Street, excellent example requiring work to cope with steep slope - pause areas, seating etc	Shaded areas and seats also benefit views (North) for residents and visitors.
6	Cheryl	Hilton	Portarlington Walking Group - Bellarine Community Health - combine comments with Jane Whittle	Yes		Yes	Pier Street, excellent example requiring work to cope with steep slope - pause areas, seating etc	Shaded areas and seats also benefit views (North) for residents and visitors.

7	Bill	Dix	Indented Head Residents Association President			
	Bill	Dix	Indented Head Residents Association President			
8	No name		Portarlinton Resident - no response maybe Magda?	no response	Would be good if Tower Rd from Sproate Street to the Queenscliffe Rd could incorporate similar features	no response

Issue 7: Inadequate emphasis on key pedestrian routes

No.	Name	Surname	Position	Is this an important issue?	Do you think the Challenge described here addresses the issue?	Do you think the Design Solution(s) will work, and if so will they work here?	Is there anything else you would like to add about this issue?
1	Graeme	Collins	St Leonards Residents Association President	Yes	Subject to a test on a small section	See above	No response
2	No name			OK	No response	No response	No response
3	No name		St Leonards Resident	Yes	Yes	Yes	For track around lake and through reserves as shown on map - including "fitness park" planned by Progress Association and track around and over Mt St Leonards for fun and fitness

4	Ingrid	Novosel	Indented Head	Yes	No response	No response	The Esplanade
5	Jane	Whittle	Portarlington Walking Group - Bellarine Community Health - combine comments with Cheryl Hilton	Yes	Yes	Yes	Need lots of seating to cope with slopes and views
6	Cheryl	Hilton	Portarlington Walking Group - Bellarine Community Health - combine comments with Jane Whittle	Yes	Yes	Yes	Need lots of seating to cope with slopes and views

7	Bill	Dix	Indented Head Residents Association President			
	Bill	Dix	Indented Head Residents Association President			
8	No name		Portarlinton Resident - Harding Street maybe Magda?	no response	no response	no response

Issue 8: It's too far/difficult to walk to shops/town centre

No.	Name	Surname	Position	Is this an important issue?	Do you think the Challenge described here addresses the issue?	Do you think the Design Solution(s) will work, and if so will they work here?	Is there anything else you would like to add about this issue?
1	Graeme	Collins	St Leonards Residents Association President	No response	No response	No response	No response
2	No name			Good - Yes	Yes	Yes	No response
3	No name		St Leonards Resident	Yes	Yes	Yes. Pause place near corner of McLeod St and Murradoc Rd	New bus shelters are ideal places for pause places but have been installed with no seat. Very poor planning to cut costs

4	Ingrid	Novosel	Indented Head	Yes	No response	Yes	Needed on Foreshore and the Esplanade, seating at bus stops
5	Jane	Whittle	Portarlington Walking Group - Bellarine Community Health - combine comments with Cheryl Hilton	Yes	Lots of seats for pause	Yes	Low maintenance surface. Lack of continuous pause places and footpaths for residents of Anne Nichol House and Lions Village to shops. ie. Gellibrand, Willis and Fisher to Newcombe Street shop, 80 people affected
6	Cheryl	Hilton	Portarlington Walking Group - Bellarine Community Health - combine comments with Jane Whittle	Yes	Lots of seats for pause	Yes	Low maintenance surface. Lack of continuous pause places and footpaths for residents of Anne Nichol House and Lions Village to shops. ie. Gellibrand, Willis and Fisher to Newcombe Street shop, 80 people affected

7 Bill Dix Indented Head Residents Association President

Bill Dix Indented Head Residents Association President

8 No name Portarlinton Resident - no response maybe Magda?

Yes - But people rarely "walk to the shops" from the hilly parts of town, if they walk they are probably recreational walkers rather than destinational walkers and may prefer circuit walks.

Yes

no response

Issue 9: Public realm fails to reflect areas coastal character and identity

No.	Name	Surname	Position	Is this an important issue?	Do you think the Challenge described here addresses the issue?	Do you think the Design Solution(s) will work, and if so will they work here?	Is there anything else you would like to add about this issue?
1	Graeme	Collins	St Leonards Residents Association President	Highly	No response	No response	No response
2	No name			No response	No response	No response	Not wood
3	No name		St Leonards Resident	Yes	Yes	Such improvements would be attractive and desirable but we need basic footpaths and curb and channel on Murradoc Rd	No response

4	Ingrid	Novosel	Indented Head	Yes	Yes	Yes	No response
5	Jane	Whittle	Portarlington Walking Group - Bellarine Community Health - combine comments with Cheryl Hilton	Yes	Yes	Yes	Paths made from recycled material, ie. rubber, plastic preferred as timber warps and requires high maintenance, eg. golf course paths for carts at Royal Melbourne Golf Course. Stones create unstable surface and safety issue - trips etc
6	Cheryl	Hilton	Portarlington Walking Group - Bellarine Community Health - combine comments with Jane Whittle	Yes	Yes	Yes	Paths made from recycled material, ie. rubber, plastic preferred as timber warps and requires high maintenance, eg. golf course paths for carts at Royal Melbourne Golf Course. Stones create unstable surface and safety issue - trips etc

7 Bill Dix Indented Head
Residents Association
President

Bill Dix Indented Head
Residents Association
President

8 No name Portarlinton Resident - Yes
maybe Magda?

tick

tick

Could start in the park opposite the
foreshore which is not very coastal and
pretty bland

Issue 9 (palette) where just marked pictures reading...right to left, then top to bottom)



No.	Name	Surname	Position	Do you believe these forms evoke a coastal character?	Do you believe these are appropriate to your town?	Are there any other forms which evoke a coastal character you believe important?
1	Graeme	Collins	St Leonards Residents Association President	No, Yes, maybe, No to deny, in small sectors, leave this to Ocean Grove and get it right	No response	No response
2	No name			Pointing to the bendy wall - this is our choice	No response	No response
3	No name		St Leonards Resident	No buoys. Palm trees have no place in Victoria - they are sparrow havens, high maintenance, unattractive and do not help our native fauna	No response	Native trees and shrubs. Sand coloured pavements and structures - Not white, grey, green or blue

4	Ingrid	Novosel	Indented Head	Yes	Yes	No response
5	Jane	Whittle	Portarlington Walking Group - Bellarine Community Health - combine comments with Cheryl Hilton	Yes	No response	Free form sculptures which relate to coastal area. Limestone signage ie entrance to town. Muscle shape design for seating relevant to local industry
6	Cheryl	Hilton	Portarlington Walking Group - Bellarine Community Health - combine comments with Jane Whittle	Yes	No response	Free form sculptures which relate to coastal area. Limestone signage, ie. entrance to town. Muscle shape design for seating relevant to local industry

7 Bill Dix Indented Head
Residents Association
President

Bill Dix Indented Head
Residents Association
President

8 No name Portarlinton Resident - Yes of a particular kind, eg. Geelong mode of
maybe Magda? "city" feel Strictly in moderation!!
o me "coastal" is more about vegetation and
natural features with minimal "built/constructed"
items laying about



Issue 9 (materials) where just marked pictures reading...right to left, then top to bottom)

No.	Name	Surname	Position	Do you believe these forms evoke a coastal character?	Do you believe these are appropriate to your town?	Are there any other materials which evoke a coastal character you believe important?	In what circumstances may these be appropriate?
1	Graeme	Collins	St Leonards Residents Association President	Too costly - we want pedestrian footpaths for children and elderly	Its pipe dream stuff	No response	When the gross domestic product of Australia equals the USA and France and Germany
2	No name			Pointing to all concrete with exposed aggregate - this is our choice	No response	No response	No response
3	No name		St Leonards Resident	Yes	Yes	Recycled plastic perhaps - depending on colour	Uneven surfaces are not appropriate where people may trip

4	Ingrid	Novosel	Indented Head		Yes	Yes	No response	No response
5	Jane	Whittle	Portarlington Walking Group - Bellarine Community Health - combine comments with Cheryl Hilton	All except blue stone. Glass safety/maintenance issue n/a. Wood decking maintenance issue.		Gopher friendly?	No response	No response
6	Cheryl	Hilton	Portarlington Walking Group - Bellarine Community Health - combine comments with Jane Whittle	All except blue stone. Glass safety/maintenance issue n/a. Wood decking maintenance issue.		Gopher friendly	No response	No response

7 Bill Dix Indented Head
Residents Association
President

Bill Dix Indented Head
Residents Association
President

8 No name Portarlinton Resident - If these are pedestrian surfaces, Yes tick
maybe Magda?

Sand

no response

				Issue 9 (patterns) where just marked pictures reading...right to left, then top to bottom)			Issue 9 (colours) where just marked pictures reading...right to left, then top to bottom)		
--	--	--	--	--	--	--	---	--	--

No.	Name	Surname	Position	Do you believe these forms evoke a coastal character?	Do you believe these are appropriate to your town?	Are there any other patterns which evoke a coastal character you believe	Do you believe these forms evoke a coastal character?	Do you believe these are appropriate to your town?	Are there any other colours which evoke a coastal character you believe
1	Graeme	Collins	St Leonards Residents Association President	No	Too costly	No response	Maybe	No. Not in St Leonards	No response
2	No name			No response	No response	No response	Pointing to the two mid ranges - a mixture of colours	No response	No response
3	No name		St Leonards Resident	Yes	In a retaining wall or slope to create artistic and pleasing surface	No response	Prefer colours that merge with the environment - why is stone, sand and beige not featured - that is the colour most associated with coastal character	Not white or grey. Prefer aqua or beige (sea and sand colours)	Yes sand or aqua

4	Ingrid	Novosel	Indented Head	Yes	Yes	No response	Yes	Yes	No response
5	Jane	Whittle	Portarlington Walking Group - Bellarine Community Health - combine comments with Cheryl Hilton	Yes	Muscle and shell shape ok	Shell	No response	No response	Sand, earth colours
6	Cheryl	Hilton	Portarlington Walking Group - Bellarine Community Health - combine comments with Jane Whittle	Yes	Muscle and shell shape ok	Shell	No response	No response	Sand, earth colours

7	Bill	Dix	Indented Head Residents Association President					
	Bill	Dix	Indented Head Residents Association President					
8	No name		Portarlinton Resident - maybe Magda?	Yes	All can be	Sails / boats/ birds tick especially pelicans	tick	Sandy shades



No.	Name	Surname	Position	Do you believe these plants evoke a coastal character?	Do you believe these are appropriate to your town?	Are there any other plants which evoke a coastal character you believe important?
1	Graeme	Collins	St Leonards Residents Association President	Too costly	No	No response
2	No name			Pointing to Top line 1 and 3, and 2nd line 1 - this is our choice	No response	No response
3	No name		St Leonards Resident	Not palm trees. Native species and grasses	Not palm trees - native species and grasses	Coastal banksias, Melaleuca Linarcifolia, Melaluka Styphloides, Eucalypt species

4	Ingrid	Novosel	Indented Head	Yes	Yes	Yes - those indigenous to IH - Moonah Trees
5	Jane	Whittle	Portarlington Walking Group - Bellarine Community Health - combine comments with Cheryl Hilton	Yes	No response	Do not introduce - spiky plants are a hazard. Palms are high maintenance - harbour vermin, bird eggs sought by rats
6	Cheryl	Hilton	Portarlington Walking Group - Bellarine Community Health - combine comments with Jane Whittle	Yes	No response	Do not introduce - spiky plants are a hazard. Palms are high maintenance - harbour vermin, bird eggs sought by rats

7 Bill Dix Indented Head
Residents Association
President

Bill Dix Indented Head
Residents Association
President

8 No name Portarlington Resident - Not too sure about palms - looks tick
maybe Magda? like Florida or Hawaii or
Geelong

Noon flower (native pigface) on sand, tea tree, paperbarks



No.	Name	Surname	Position	Do you believe these plants evoke a coastal character?	Do you believe these are appropriate to your town?	Are there any other plants which evoke a coastal character you believe important?
1	Graeme	Collins	St Leonards Residents Association President	Too costly	No	No response
2	No name			Pointing to Top line 1 and 3, and 2nd line 1 - this is our choice	No response	No response
3	No name		St Leonards Resident	Not palm trees. Native species and grasses	Not palm trees - native species and grasses	Coastal banksias, Melaleuca Linarcifolia, Melaluka Styphloides, Eucalypt species

4	Ingrid	Novosel	Indented Head	Yes	Yes	Yes - those indigenous to IH - Moonah Trees
5	Jane	Whittle	Portarlington Walking Group - Bellarine Community Health - combine comments with Cheryl Hilton	Yes	No response	Do not introduce - spiky plants are a hazard. Palms are high maintenance - harbour vermin, bird eggs sought by rats
6	Cheryl	Hilton	Portarlington Walking Group - Bellarine Community Health - combine comments with Jane Whittle	Yes	No response	Do not introduce - spiky plants are a hazard. Palms are high maintenance - harbour vermin, bird eggs sought by rats

7 Bill Dix Indented Head
Residents Association
President

Bill Dix Indented Head
Residents Association
President

8 No name Portarlington Resident - Not too sure about palms - looks tick
maybe Magda? like Florida or Hawaii or
Geelong

Noon flower (native pigface) on sand, tea tree, paperbarks

Issue 10: Creeks and drainage lines form barriers to movement

No.	Name	Surname	Position	Is this an important issue?	Do you think the Challenge described here addresses the issue?	Do you think the Design Solution(s) will work, and if so will they work here?	Is there anything else you would like to add about this issue?
1	Graeme	Collins	St Leonards Residents Association President	Yes - very	Anything is better than Nothing	Is it practical?	No response
2	No name			No response	No response	No response	No response
3	No name		St Leonards Resident	No	Yes	There is a proposal by a few residents for a bridge over the lake. This is not supported by most of the community.	It would be a bridge going nowhere - it would be attractive for homes nearby, but certainly does not warrant the huge expense, when we have so many pressing needs in town. Footpaths on the main road - walking track around the lake to link beach, parklands and provide access to these amenities for residents.

4	Ingrid	Novosel	Indented Head	No	No response	No response	No response
5	Jane	Whittle	Portarlington Walking Group - Bellarine Community Health - combine comments with Cheryl Hilton	Yes	Yes	Yes	Storm water drainage is a health hazard on our coast. Diversion urgently required! Location between Pier and Simson Streets area. Putrid water creates a high odour and is detrimental to public and visitors!
6	Cheryl	Hilton	Portarlington Walking Group - Bellarine Community Health - combine comments with Jane Whittle	Yes	Yes	Yes	Storm water drainage is a health hazard on our coast. Diversion urgently required! Location between Pier and Simson Streets area. Putrid water creates a high odour and is detrimental to public and visitors!

7 Bill Dix Indented Head
Residents Association
President

Bill Dix Indented Head
Residents Association
President

8 No name Portarlington Resident - There are a couple of spots on the cliff walking track where a culvert interrupts the track tick tick Prefer the non-span arch version

Issue 11: Managing access to ecologically sensitive areas

No.	Name	Surname	Position	Is this an important issue?	Do you think the Challenge described here addresses the issue?	Do you think the Design Solution(s) will work, and if so will they work here?	Is there anything else you would like to add about this issue?
1	Graeme	Collins	St Leonards Residents Association President	Yes	Yes	Probably	No response
2	No name			No response	No response	No response	No response
3	No name		St Leonards Resident	Yes	Yes	Yes, as our population grows, measures such as these will be needed in the future to protect the coastline	No response

4	Ingrid	Novosel	Indented Head	Yes		Yes	No response	No response
5	Jane	Whittle	Portarlington Walking Group - Bellarine Community Health - combine comments with Cheryl Hilton	Yes		Yes. Barriers along Pier Street and The Esplanade require upgrading	Provide proper paths to dog beach and boat ramp near Fairfax Street	Fisher Street urgently requires safety barriers against cliff edge
6	Cheryl	Hilton	Portarlington Walking Group - Bellarine Community Health - combine comments with Jane Whittle	Yes		Yes. Barriers along Pier Street and The Esplanade require Upgrading	Provide proper paths to dog beach and boat ramp near Fairfax Street	Fisher Street urgently requires safety barriers against cliff edge

7	Bill	Dix	Indented Head Residents Association President			
	Bill	Dix	Indented Head Residents Association President			
8	No name		Portarlinton Resident - For the reserve / wetlands area maybe Magda?	tick off Point Richards Rd, and areas along the coastal walk	tick, for the Point Richards Rd area. Access to the remnant vegetation on this walking track should be minimised	no response

Issue 12: Few opportunities to enjoy beautiful views or rest and relax

No.	Name	Surname	Position	Is this an important issue?	Do you think the Challenge described here addresses the issue?	Do you think the Design Solution(s) will work, and if so will they work here?	Is there anything else you would like to add about this issue?
1	Graeme	Collins	St Leonards Residents Association President	Yes	Yes	Yes	No
2	No name			No response	No response	No response	No response
3	No name		St Leonards Resident	Yes	Yes	Yes, seating needed in parkland area around lake but first we need a walking track	No response

4	Ingrid	Novosel	Indented Head	Yes		Yes	No response	Needed on the Esplanade, Batman Rd - at Bus stops
5	Jane	Whittle	Portarlington Walking Group - Bellarine Community Health - combine comments with Cheryl Hilton	Yes		Yes	Yes	Need more shaded seats and picnic table settings near the Pier and Fairfax Street boat ramp
6	Cheryl	Hilton	Portarlington Walking Group - Bellarine Community Health - combine comments with Jane Whittle	Yes		Yes	Yes	Need more shaded seats and picnic table settings near the Pier and Fairfax Street boat ramp

7 Bill Dix Indented Head Residents Association President

Bill Dix Indented Head Residents Association President

8 No name Portarlington Resident - There are some glorious spots on the walk/track on the cliff where protected/shaded seating would be a great feature Yes tick There will probably be some great opportunities on the Arlington Rise site

Issue 13: Incomplete understanding of opportunities

No.	Name	Surname	Position	Is this an important issue?	Do you think the Challenge described here addresses the issue?	Do you think the Design Solution(s) will work, and if so will they work here?	Is there anything else you would like to add about this issue?
1	Graeme	Collins	St Leonards Residents Association President	St Leonards needs footpaths Now	No response	No response	No response
2	No name			No response	No response	No response	No response
3	No name		St Leonards Resident	Yes	Yes	Yes we already have some history at Labyrinth and more is planned. Finance is an issue!	There can be too many signs, but tastefully done can be very interesting

4	Ingrid	Novosel	Indented Head	Yes	Yes	Yes	At town centre - Batman Park also south of Batman Memorial near walking track. Also near Esplanade / Hood Rd Corner
5	Jane	Whittle	Portarlington Walking Group - Bellarine Community Health - combine comments with Cheryl Hilton	Yes. History and design of town is of interest to tourists (maps and bus stops identified)	Yes	Lamenting will not survive	Vandal proof design 3D story, ie. Serpentine & Bridgewater ideal examples
6	Cheryl	Hilton	Portarlington Walking Group - Bellarine Community Health - combine comments with Jane Whittle	Yes. History and design of town is of interest to tourists (maps and bus stops identified)	Yes	Lamenting will not survive	Vandal proof design 3D story, ie. Serpentine & Bridgewater ideal examples

7 Bill Dix Indented Head Residents Association President

Bill Dix Indented Head Residents Association President

8 No name Portarlington Resident - I strongly support the general idea of informing people of options
Port has more to offer than the beach
They could, information needn't only be vandalisable structures but also in publications
There could be "10 walks around town" from easy 30 minutes to challenging 2 hours. Would be great if the town got a reputation for "eco walks" or nature walks

Issue 14: Misunderstandings between different sections of the community

No.	Name	Surname	Position	Is this an important issue?	Do you think the Challenge described here addresses the issue?	Do you think the Design Solution(s) will work, and if so will they work here?	Is there anything else you would like to add about this issue?
1	Graeme	Collins	St Leonards Residents Association President	Yes	Lets just get footpaths in St Leonards	No response	No response
2	No name			No response	No response	No response	No response
3	No name		St Leonards Resident	No	No response	No response	No response

4	Ingrid	Novosel	Indented Head	Yes	Yes	Yes	No response
5	Jane	Whittle	Portarlington Walking Group - Bellarine Community Health - combine comments with Cheryl Hilton	Yes	Yes	Yes	No response
6	Cheryl	Hilton	Portarlington Walking Group - Bellarine Community Health - combine comments with Jane Whittle	Yes	Yes	Yes	No response

7	Bill	Dix	Indented Head Residents Association President		
	Bill	Dix	Indented Head Residents Association President		
8	No name		Portarlinton Resident - Gateway (tick) as long as tick maybe Magda? its not the Big Mussel	tick	tick

Issue 15: Coastal areas are subject to more severe weather than elsewhere

No.	Name	Surname	Position	Is this an important issue?	Do you think the Challenge described here addresses the issue?	Do you think the Design Solution(s) will work, and if so will they work here?	Is there anything else you would like to add about this issue?
1	Graeme	Collins	St Leonards Residents Association President	No	Prevailing weather from South West	No response	No response
2	No name			No response	No response	No response	No response
3	No name		St Leonards Resident	Yes	Yes	Yes but NOT exotic trees/planting. Native fauna needs native flora to exist	Cypress and Pines along the waterfront should be removed as they age and be replaced with native species

4	Ingrid	Novosel	Indented Head	Yes	Yes	No response	The Esplanade
5	Jane	Whittle	Portarlington Walking Group - Bellarine Community Health - combine comments with Cheryl Hilton	Yes	Yes	Yes	Do not remove Cypress which while mature - do provide large shady areas and roots stabilise ground. Need to replant indigenous shady trees where possible without restricting views
6	Cheryl	Hilton	Portarlington Walking Group - Bellarine Community Health - combine comments with Jane Whittle	Yes	Yes	Yes but not exotic trees planting. Native fauna needs native flora to exist	Do not remove Cypress which while mature - do provide large shady areas and roots stabilise ground. Need to replant indigenous shady trees where possible without restricting views

7 Bill Dix Indented Head
Residents Association
President

Bill Dix Indented Head
Residents Association
President

8 No name Portarlinton Resident - Yes
maybe Magda?

tick

The Boat Ramp area near the toilet
block on the Esplanade needs this
kind of attention

no response

Issue 15 (Option 2): Design Solution

No.	Name	Surname	Position	Is this an important issue?	Do you think the Challenge described here addresses the issue?	Do you think the Design Solution(s) will work, and if so will they work here?	Is there anything else you would like to add about this issue?
1	Graeme	Collins	St Leonards Residents Association President	Yes	Yes	Yes	Yes
2	No name			No response	No response	No response	No response
3	No name		St Leonards Resident	No	Yes	Option 2 is not needed at this stage of our development	No response

4	Ingrid	Novosel	Indented Head	Yes	No response	No response	Foreshore - Wrathall Reserve, near Ozone Anchor on the Esplanade, near bus stop
5	Jane	Whittle	Portarlington Walking Group - Bellarine Community Health - combine comments with Cheryl Hilton	Yes. ie, similar to Wrathall Reserve at Indented Head located at Pier	Yes	Yes	Lightening conductors must be installed on shelters. Shelters are a magnet for vandals
6	Cheryl	Hilton	Portarlington Walking Group - Bellarine Community Health - combine comments with Jane Whittle	Yes. ie, similar to Wrathall Reserve at Indented Head located at Pier	Yes	Yes	Lightening conductors must be installed on shelters, shelters are a magnet for vandals

7	Bill	Dix	Indented Head Residents Association President			
	Bill	Dix	Indented Head Residents Association President			
8	No name		Portarlinton Resident - no response maybe Magda?	no response	no response	no response

Issue 16: Parking on footpath provides barrier to pedestrian movement

No.	Name	Surname	Position	Is this an important issue?	Do you think the Challenge described here addresses the issue?	Do you think the Design Solution(s) will work, and if so will they work here?	Is there anything else you would like to add about this issue?
1	Graeme	Collins	St Leonards Residents Association President	Then install curb and channel along Murradoc Rd starting at Ibbotson Street to Town Centre	No response	No response	No response
2	No name			No response	No response	No response	No response
3	No name		St Leonards Resident	No response	No response	No response	No response

4	Ingrid	Novosel	Indented Head	Yes	Yes	Yes	Area near ozone anchor cars parking on walking track - beautiful views need lookout design
5	Jane	Whittle	Portarlinton Walking Group - Bellarine Community Health - combine comments with Cheryl Hilton	Yes	Yes	Must be readily visible to pedestrians and motorists	Height is a safety issue
6	Cheryl	Hilton	Portarlinton Walking Group - Bellarine Community Health - combine comments with Jane Whittle	Yes	Yes	Must be readily visible to pedestrians and motorists	Height is a safety issue

Issue 16 (Option 2): Design Solution

No.	Name	Surname	Position	Is this an important issue?	Do you think the Challenge described here addresses the issue?	Do you think the Design Solution(s) will work, and if so will they work here?	Is there anything else you would like to add about this issue?
1	Graeme	Collins	St Leonards Residents Association President	Yes	Around St Leonards Lake in part	Yes	No response
2	No name			No response	No response	No response	No response
3	No name		St Leonards Resident	No response	No response	No response	No response

4	Ingrid	Novosel	Indented Head	Yes		No response	No response	The Esplanade
5	Jane	Whittle	Portarlington Walking Group - Bellarine Community Health - combine comments with Cheryl Hilton	Yes		Yes	Yes	Deters footpath parking which is a good move! Height is also important safety issue - must be visible
6	Cheryl	Hilton	Portarlington Walking Group - Bellarine Community Health - combine comments with Jane Whittle	Yes		Yes	Yes	Deters footpath parking which is a good move! Height is also important safety issue - must be visible

7	Bill	Dix	Indented Head Residents Association President			
	Bill	Dix	Indented Head Residents Association President			
8	No name		Portarlington Resident - No maybe Magda?	no response	no response	no response

Issue 17: Busy roads act as barrier to pedestrian movement to beach, parks and shops

No.	Name	Surname	Position	Is this an important issue?	Do you think the Challenge described here addresses the issue?	Do you think the Design Solution(s) will work, and if so will they work here?	Is there anything else you would like to add about this issue?
1	Graeme	Collins	St Leonards Residents Association President	Yes	Try on the Esplanade and the Bluff St Leonards	Yes	No response
2	No name			No response	No response	No response	No response
3	No name		St Leonards Resident	Yes	Yes	Yes - needed to cross from township to beach	No response

4	Ingrid	Novosel	Indented Head	Yes	Yes	Yes	Needed on the Esplanade, Batman Rd, Ibbotson Street
5	Jane	Whittle	Portarlington Walking Group - Bellarine Community Health - combine comments with Cheryl Hilton	Yes	Application, ie. Smythe Street access for school to aquatic centre and general cemetery access is an issue on a busy road	Tactile to provide smoother surface for gopher, wheel chair safety	No response
6	Cheryl	Hilton	Portarlington Walking Group - Bellarine Community Health - combine comments with Jane Whittle	Yes	Application, ie. Smythe Street access for school to aquatic centre and general cemetery access is an issue on a busy road	Tactile to provide smoother surface for gopher, wheel chair safety	No response

7 Bill Dix Indented Head
Residents Association
President

Bill Dix Indented Head
Residents Association
President

8 No name Portarlinton Resident - Yes
maybe Magda?

Smythe/High Street? Difficult no response
because of hilly nature if
Smythe St people from
Arlington Rise crossing to
High St connection

No response

Additional unsolicited comments

No.	Name	Surname	Position	Any other comments
1	Graeme	Collins	St Leonards Residents Association President	Get on with it
2	No name			No response
3	No name		St Leonards Resident	No response
4	Ingrid	Novosel	Indented Head	Bus parking bays, bus shelters and bus stops - see attached list
5	Jane	Whittle	Portarlington Walking Group - Bellarine Community Health - combine comments with Cheryl Hilton	No response
6	Cheryl	Hilton	Portarlington Walking Group - Bellarine Community Health - combine comments with Jane Whittle	No response

7	Bill	Dix	Indented Head Residents Association President	Dear Carmel, Arising out of our meeting on Friday Feb 22 I am attaching a paper covering the issue I am concerned about relating to the Foreshore Walkway. Recognising the involvement of Bellarine Bayside I have also sent a copy to Tim Page - Walker. Your support for this element of the walking track overall development would be appreciated. Kindest Regards Bill Dix President, Indented Head Community Association.
	Bill	Dix	Indented Head Residents Association President	The Indented Head Community Association has recently been cooperating with the City of Greater Geelong in the development of implementation plans associated with this Program. Arising out of these activities we have identified the following specific issue which we consider essential to achievement of the optimum outcome in one area of Indented Head. The area in question is contained in the foreshore Walkway thru Indented Head specifically the section between the Northern end of Batman Park to the Taylor Reserve. Currently the concept map we have seen shows the walking track continuing along the foreshore for its entire length. This is in conflict with the existing track which in this area is approached from Half Moon Bay via a ramp and continues along at the level of The Esplanade past the Ozone Anchor site to Taylor Reserve. Our proposal is that this route be maintained in the final design of the full length of the walk. In addition to including exposure to the Ozone Anchor Historic Site adoption of this routing has the following advantages; .

1. It avoids development of a new route involving disturbing the present environment where there is insufficient foreshore area available.
 2. Establishes a clearly identifiable entry point to the track adjacent to the centre of Indented Head.
 3. The route of the track at the higher elevation provides walkers with an exceptional view point overlooking the ozone, Port Phillip Bay and across to the Melbourne skyline.
 4. Utilising the existing track as a basis for this section should reduce costs.
- We week your support for this proposal

8	No name	Portarlington Resident - If possible some thought should be given to facilitating connections with longer walking tracks for serious recreational walkers who would access the network proposed by the Bellarine Tracks and Trails Strategy . See attached. * cyclists / horse riders maybe Magda?	2 maps attached
---	---------	---	-----------------